

ANTARES A 105

SPLIT BODY BALL VALVE – FULL BORE

MAIN STANDARD FEATURES

- CONSTRUCTION: ASTM A 105
- General prescriptions: BS 5351
- Certifications: FIRE SAFE to: BS 6755 - API 6 FA - API 607 TÜV for TA Luft
- DIAMETER: from DN 15-1/2" to DN 150-6"
- PRESSURES: PN 16/40 from DN 15 to DN 50
PN 16 from DN 65 to DN 150
ANSI 150 from 1/2" to 6"
- TEMPERATURE LIMITS: from -10°C to +180°C
- CONNECTIONS: flanges to UNI 2223-2229 and DIN 2501 BL.1
DIN 3202 face to face F4
flanges to ANSI 150 RF - ANSI B16.5 - ANSI B16.10 face to face
- BLOW-OUT PROOF stem with antistatic device (from DN40)
- WRAPPING SEATS
- TRIPLE stem-packing with labyrinth effect and automatic adjustment by Belleville washers
- ISO 5211 mounting plate for actuators
- OPERATION device: lever handle

SPECIAL EXECUTIONS

- 15% GLASS-FILLED PTFE with temperature limits -10°C + 195°C
- PTFE + CARBOGRAPHITE with temperature limits -20°C +210°C
- From DN 65 to DN 150 PN 25/40
- From DN15 to DN100, PN16/40, DIN 3202 face to face F1
- From 1/2" to 6" ANSI 300
- DN 200 PN 16, and 8" ANSI 150
(with application of reduction gear)
- Yellow lever handle for gas
- Antistatic device from DN15 to DN32
- Body in LF2 up to -20°C
- On request the valve is available with ATEX certificate
- For further special requests please consult our technical/commercial service



STANDARD PART NUMBERS

Art. 2931
ANSI 150 RF

Art. 2932
DIN face to face F4

Art. 2934
DIN face to face F1

GENERAL APPLICATIONS

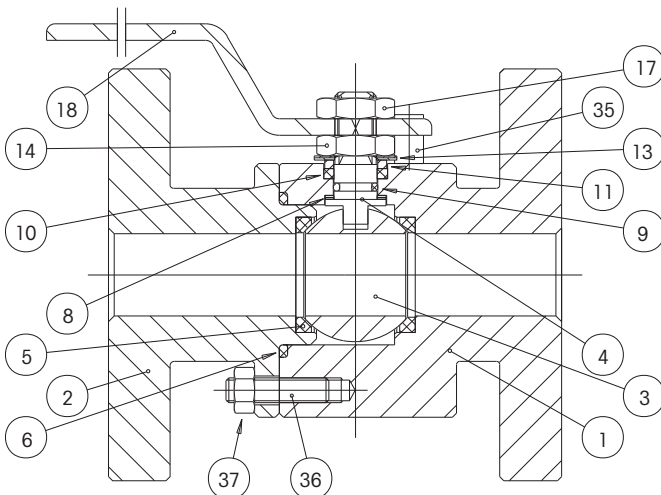
Use as an ON-OFF valve for: installations for gas, water, air distribution. Suitable for vacuum up to 1×10^{-3} STD CC/SEC, steam up to +195°C with PTFE+CARBOGRAPHITE.

Thanks to its firm standardizations it is among the most used valves in all industrial plants.

For special utilizations ascertain the compatibility with process features and the corrosion resistance also by the relevant table.

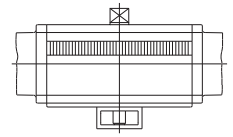
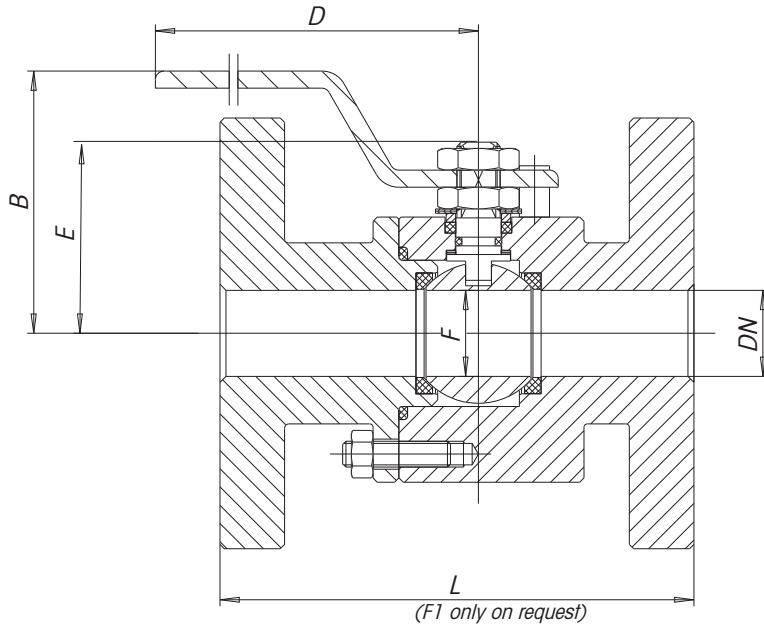
LIST OF COMPONENTS AND MATERIALS

REF.	PART	MATERIAL	DIN MAT.	QTY
1	BODY	ASTM A105		1
2	BODY FLANGE	ASTM A105		1
3	BALL	AISI 304	1.4301	1
4	STEM	AISI 304	1.4301	1
5	SEAT	PTFE		2
6	FLANGE SEAL	PTFE		1
8	STEM SEAL	PTFE		1
9	STEM O-RING	VITON		1
10	UPPER SEAL	PTFE		1
11	PACKING GLAND	AISI 304	1.4310	1
13	BELLEVILLE WASHERS	50CrV4		2
14	STEM RETAINING NUT	C.S. GALV.		1
17	LOCKING NUT	C.S. GALV.		1
18	LEVER HANDLE	C.S. GALV.		1
35	OPERATION STOP PIN	C.S. 8.8		1
36	STUD BOLT	A 193 B7		4
37	NUT	A 194 2H		4

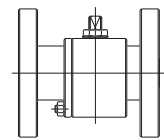


ANTARES A 105

SPLIT BODY BALL VALVE - FULL BORE



By removing the lever handle, the ANTARES valve can be assembled directly with an actuator by means of a bracket with screws, the stem adapter and by replacing the operation stop (part 35) of the valve (kit supplied upon request).



DIN SERIES

SIZE	B	D	E	F	L F4	L F1	PN	ISO	WEIGHT in gr.
DN15	66	140	48	15	115	130	16/40	F03	3600
DN20	69	140	51	20	120	150	16/40	F03	4635
DN25	82	180	62,5	25	125	160	16/40	F04	5750
DN32	87	180	67	32	130	180	16/40	F04	8320
DN40	108	230	87,5	40	140	200	16/40	F05	11160
DN50	115	230	94,5	49,5	150	230	16/40	F05	14900
DN65	139	320	119,5	65	170	290	16	F07	23750
DN80	150	320	130	78	180	310	16/40	F07	28530
DN100	163	370	148,5	96	190	350	16	F10	35560
DN150	249	584	200	144	350	480	16	F12	108900

ANSI 150 SERIES

SIZE	B	D	E	F	L	ISO	WEIGHT in gr.
1/2"	66	140	48	15	108	F03	3600
3/4"	69	140	51	20	117	F03	3750
1"	82	180	62,5	25	127	F04	5525
1 1/4"	87	180	67	32	140	F04	8320
1 1/2"	108	230	87,5	40	165	F05	10260
2"	115	230	94,5	49,5	178	F05	13755
2 1/2"	139	320	119,5	65	190	F07	23130
3"	150	320	130	78	203	F07	29235
4"	163	370	148,5	96	229	F10	39385
6"	249	584	200	144	394	F12	114100

BREAKAWAY TORQUES in Nm

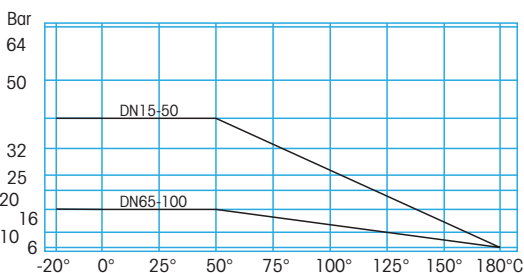
PN - bar	DN size									
	15	20	25	32	40	50	65	80	100	
0	4	7	15	21	26	36	51	81	130	
16	5	8	17	23	28	39	54	86	150	
40	6	10	22	28	32	45	62	120	200	

Nm

The values in Nm may vary as a function of the seals material, temperature and type of medium. For a firm operation of the various types of actuators, in the different working conditions it is necessary to consider a safety factor of 1.5. During operation, with frequent open and close cycles, the operating torque can decrease considerably in comparison with the initial breakaway torque.

PRESSURE/TEMPERATURE DIAGRAM

At each pressure level corresponds the admissible temperature level.



LOSS OF HEAD DIAGRAM/FLOW RATE

The Kv value is the flow rate causing a pressure drop of 1 bar

