

## BA Series Bevel Gear Box

### Multi-turn, For Manual Actuated Valves

#### Feature:

Multi-turn Valve Manual actuators BA Series are suitable for working with gate valves, globe valves and so on.

There are two kinds of connections between the output shaft and the valve: stem-nut connection, and jaw connection.

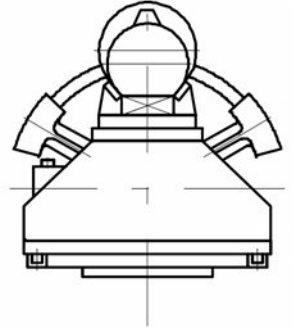
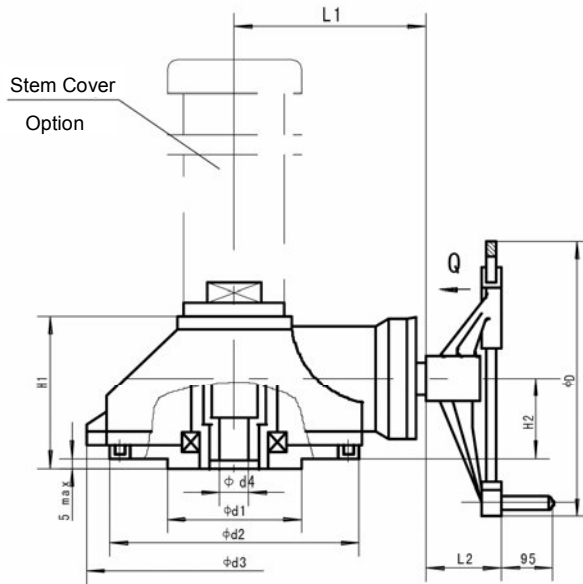
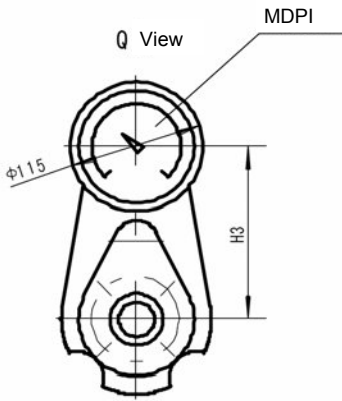
BA(P) actuator has position indicating unit; BA(S) has position indicating unit and the feedback function of electric on/off signal upon both open and close ends position of the valve.



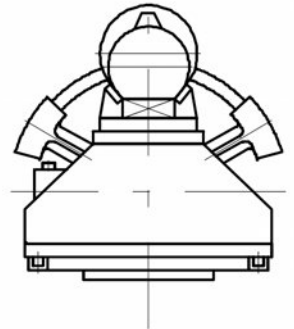
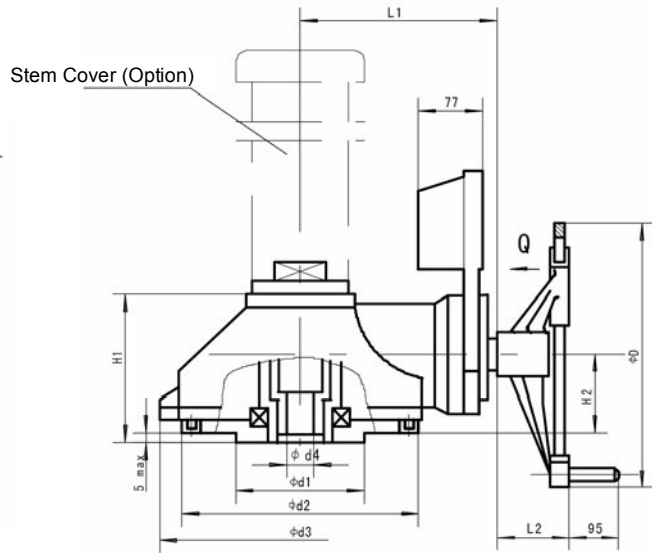
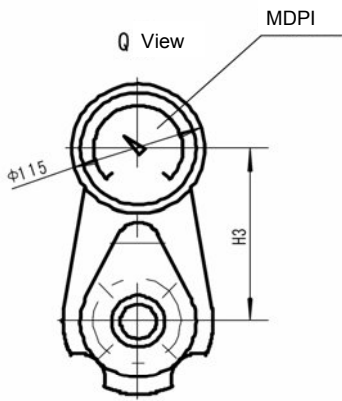
#### Technical Data:

Model	Allowed Torque (N·m)	Allowed Thrust (kN)	Ratio	Allowed Stem Dia (mm)		Weight (kg)	Handwheel Dia. (mm)
				Thread	Hole (key)		
BA-00P	340	61	2.5:1	45	35	21	305
BA-00S							
BA-00							
BA-0P	730	98	3:1	55	45	36	
BA-0S							
BA-0							
BA-1P	1500	196	4.11:1	62	52	51	458
BA-1S							
BA-1							
BA-2P	3000	343	6:1	85	70	100	
BA-2S							
BA-2							
BAA-3	5800	618	19.34:1	127	/	310	610

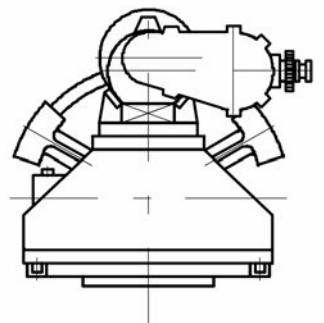
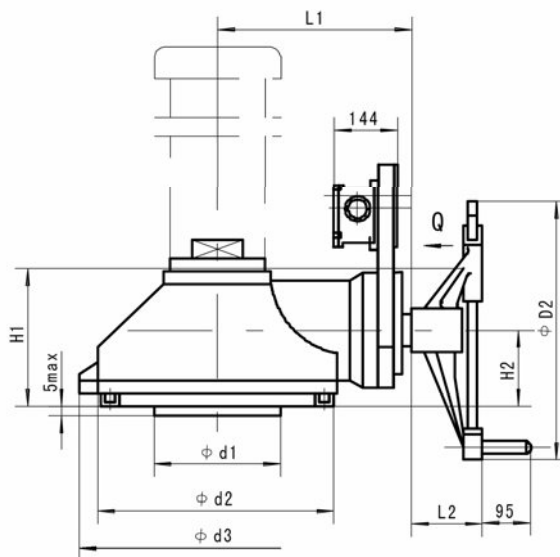
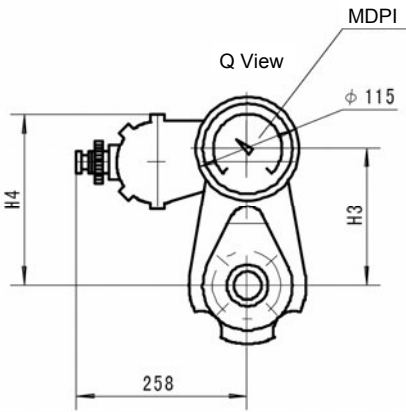
**Dimensions:  
1. BA Basic Type**



**2. BA(P) Outline Dimensions:**

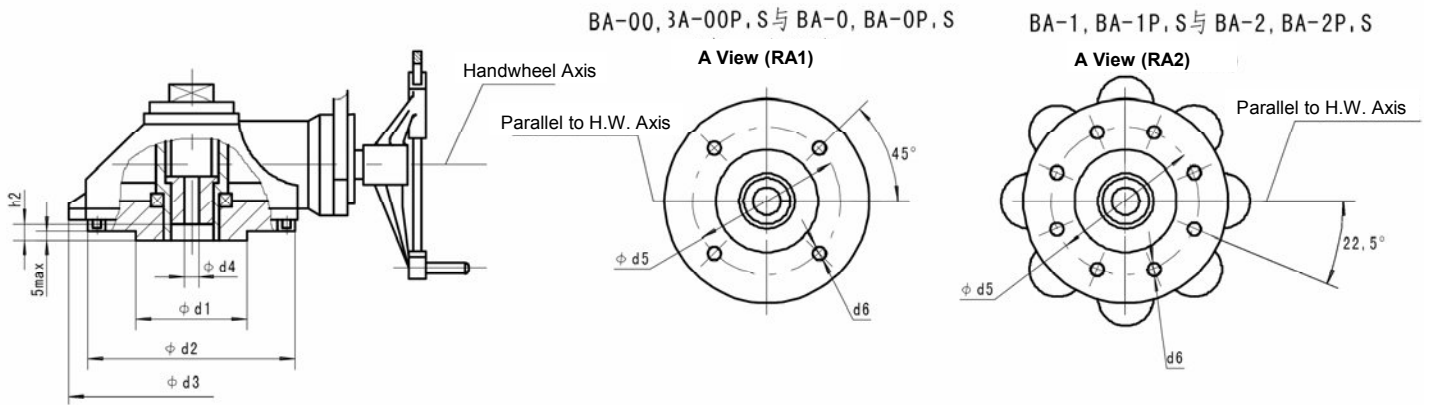


**3. BA(S) Outline Dimensions:**

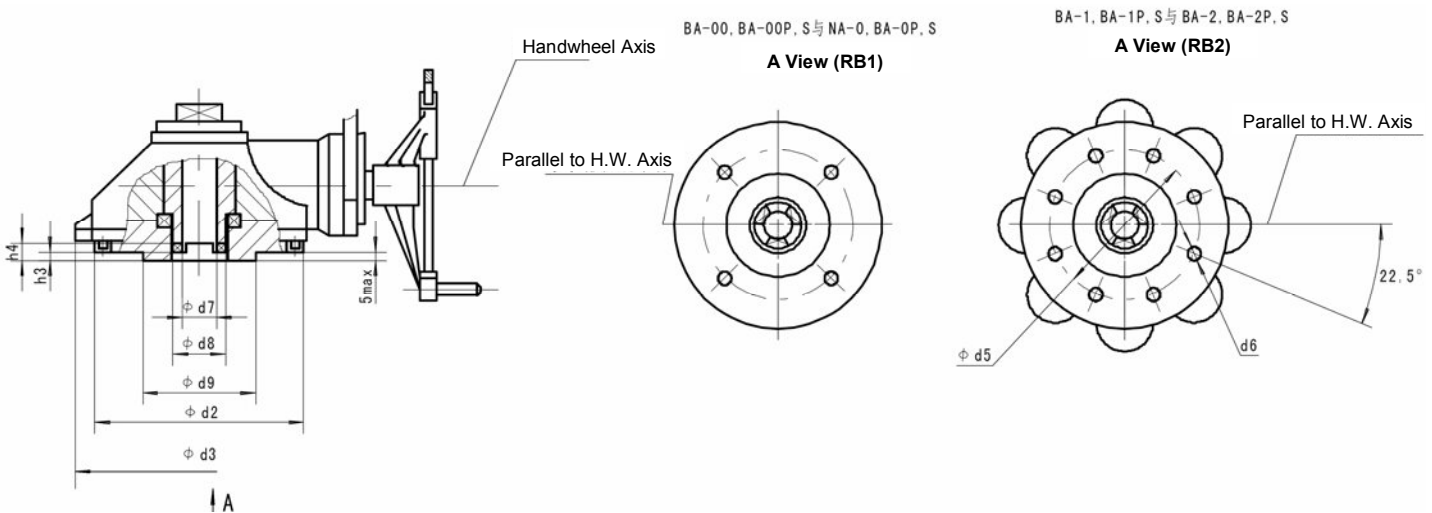


Connection Type of Valve Stem Nut for BA

Flange and Screw Hole Type



Connection Type of Jaw for BA



Dimensions for BA Series:

Model	L1	L2	H1	H2	H3	H4	d1	d2	d3	d4	d5	d6	d7	d8		h1	h2	h3	h4	D
BA-00P	154	92	125	76.5	128	/	95 +0.036 -0.090	178	/	45	140	4-M16 Depth 26	50	64.5	100 +0.036 -0.090	3	58	/	15	305
BA-00S					/	198														
BA-00					/	/														
BA-0P	170	92	140	85	128	/	130 0 -0.076	210	/	55	165	4-M20 Depth 30	63	79	/	70	/	/	/	
BA-0S					/	198														
BA-0					/	/														
BA-1P	225	107	160	95	138	/	200 +0.050 -0.122	289	/	62	254	8-M16 Depth 30	70	89	/	5	75	5	/	/
BA-1S					/	208														
BA-1					/	/														
BA-2P	305	107	229	140	148	/	230 +0.050 -0.122	343	386	85	298	8-M20 Depth 30	95	119	/	14	110	/	18	408
BA-2S					/	218														
BA-2					/	/														
BA-3	395	118	325	162	/	/	260 +0.056 -0.037	416	510	127	356	8-M30 Depth 45	128	166	/	32	168	/	20	610