



SAFLOK® QUICK COUPLER

prevents accidental disconnection

AS PER DIN 2828 & A-A-59326(MIL-C-27487) SPECIFICATION WITH OUR PATENTED SAFETY LOCKING CAM ARM. **SAFLOK®** ALWAYS MAKE THE BEST SAFETY FOR ALL PEOPLE AND ENVIRONMENT FROM NOW UNTIL THE COMING TWENTY-FIRST CENTENARY.

SPECIAL CHARACTERISTICS

SAFETY IS SO VERY IMPORTANT FOR ALL PEOPLE

IT IMPROVES THE SAFETY OF COUPLING IN THE TRANSPORTATION OF HIGH VALUE AND HIGH RISK LIQUID CHEMICALS. IT PREVENTS ACCIDENTAL DISCONNECTION OR DISASTER THAT MIGHT HAPPEN DUE TO THE NEGLIGENCE OF HUMAN OPERATION OR THE NATURAL ABRASION OF THE METAL LOCKING CAM FACE.

LOCKS AUTOMATICALLY WHEN YOU CLOSE THE ARMS

CLOSE THE **SAFLOK®** QUICK COUPLER WITH ONE SMOOTH MOTION--JUST LIKE A REGULAR QUICK COUPLING. IT LOCKS ITSELF AUTOMATICALLY AND STAYS LOCKED UNTIL YOU OPEN IT.

VIRTUALLY EFFORTLESS

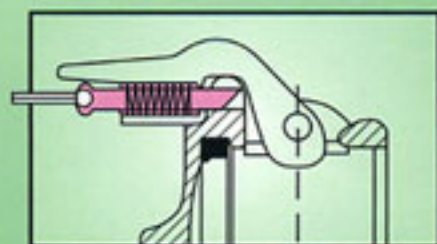
YOU CLOSE THE **SAFLOK®** COUPLER'S PATENTED ARMS NORMALLY AND THEY LOCK THEMSELVES. YOU RELEASE THE LOCKING WITH AN EASY TUG ON THE FINGER RINGS. EVERY TIME YOUR OPERATORS OPEN OR CLOSE ON **SAFLOK®** COUPLER, THEY SAVE TIME AND EFFORT. AND YOU SAVE WORRY.

LESS RISK, LESS HASSLE

YOU SHALL LIKE THE **SAFLOK®** COUPLER BECAUSE ITS SELF-LOCKING ACTION REDUCES YOUR RISK AUTOMATICALLY. YOUR OPERATORS WILL LIKE IT BECAUSE IT WORKS JUST LIKE A REGULAR QUICK COUPLER--NO HASSLE, NO PROBLEM.

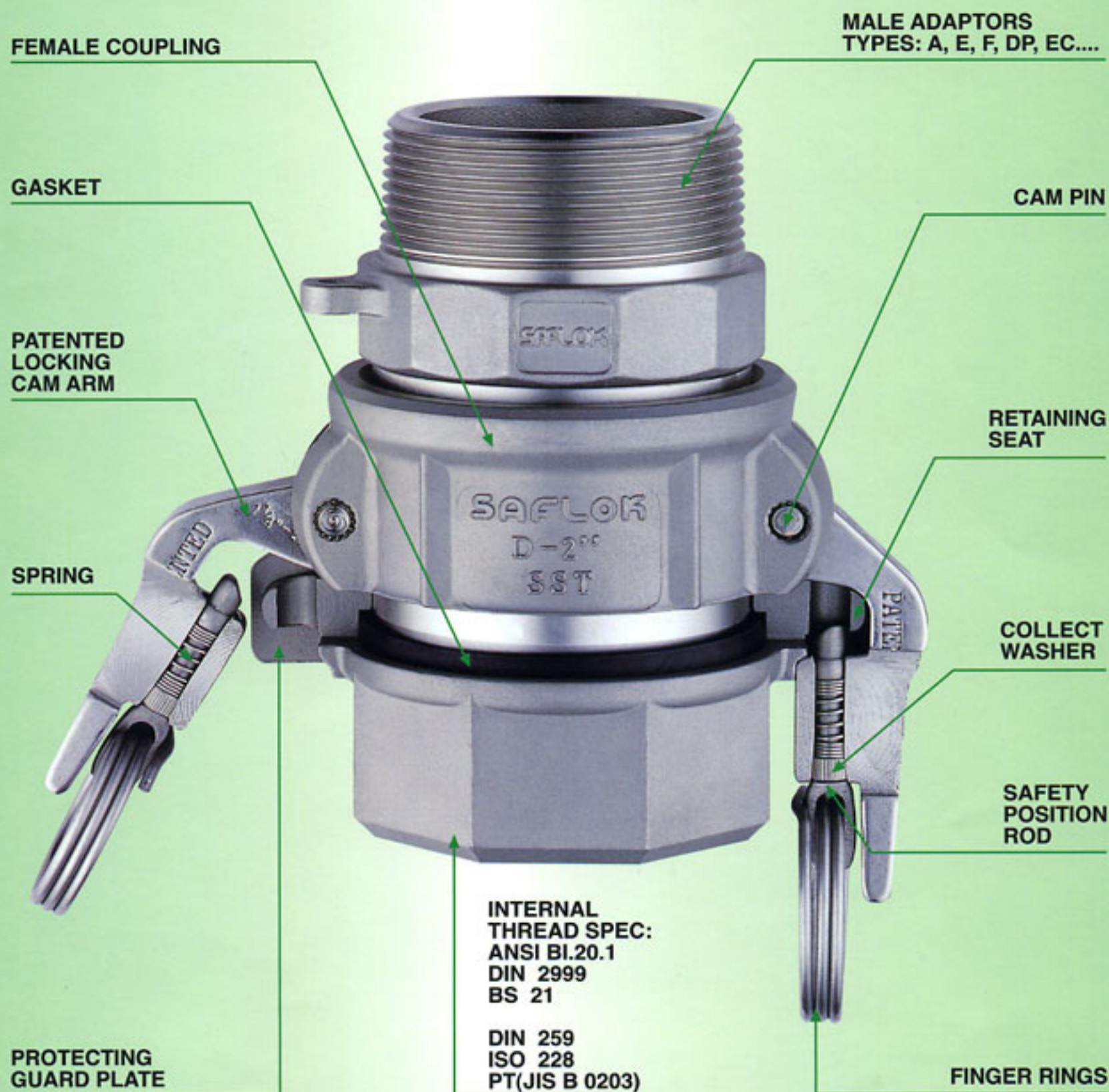
COMPATIBLE WITH OTHER QUICK COUPLING

AND IT'S IN STOCK NOW IN ALL POPULAR SIZES FROM 1/2" (DN-15) TO 4" (DN-100).



WORLD'S PATENT

ALL COMPONENT PARTS OF SAFLOK® QUICK COUPLER.





CERTIFICATE

**The TÜV CERT Certification Body
of TÜV Anlagentechnik GmbH**

TÜV Rheinland/Berlin-Brandenburg Group of Companies

certifies in accordance with TÜV CERT procedures that



Waterson Corp.

Office: 8F, No. 428, Wu Chuan S. Road, Taichung City 402, Taiwan.

Factory: No.11 Tou-Kung 12 Road, Tou-Liu Expand Industrial Park, Tou-Liu City, Yun-Lin Hsien, Taiwan.

has established and applies a quality system for

Design/Development, Manufacturing and Sales of:

- A. Metal Investment Casting Parts for Hydraulic System Cam Lock Safe Quick Couplers and Adapters "SAFLOK", Clamps and Ferrules, Butterfly Valves, Ball Valves "WAT", Lock Cylinders and Locks "W-LOK"
- B. Parts, Components and Accessories for Office Furniture

An audit was performed, Report No. **79107**

Proof has been furnished that the requirements according to

DIN EN ISO 9001:2000

are fulfilled.

The certificate is valid until **2004 March**

Certificate Registration No. **09 100 79107**



Cologne, 2001-04-09

First certification 1997

**TÜV Rheinland/
Berlin-Brandenburg**

TÜV CERT Certification Body of
TÜV Anlagentechnik GmbH

**THE USER DOES NOT NEED TO LEARN NEW TECHNIQUE
NEW METHOD OR ANY ADDITIONAL TOOL TO USE THIS PRODUCT WITH ONE
SMOOTH MOTION. ----JUST LIKE A REGULAR QUICK COUPLING.**

360° ROTATION

THE 360° SWIVEL FEATURE HELPS PREVENT
HOSE KINKING AND TWISTING.

INTERCHANGEABLE SHANKS

USERS CAN SPECIFY THE MATERIAL FOR
COUPLER BODY AND SHANK TO CONTROL
COST AND MEET SPECIFIC APPLICATIONS

ADAPTORS FOR COUPLERS

WE HAVE MANY DIFFERENT TYPES AS
PER A-A-59326 (MIL-C-27487) AND DIN-
2828, EXAMPLE: A, E, F, EC, DP.

RUBBER OR TEFLON GASKET

FINGER RINGS

* STAINLESS STEEL SPRING
FINGER RINGS WON'T GET
TRAPPED UNDER AN ARM
MAKING SECURE CLOSING
EASIER.

* RELEASE THE LOCKING WITH AN
EASY TUG ON THE FINGER
RINGS.

PATENTED LOCKING CAM ARMS

SELF LOCKING ARMS
PREVENT OPENING DUE TO
NEGLIGENCE OR ACCIDENT
WHEN THE USER ENGAGES
BOTH ARMS IN A SIMPLE
SINGLE MOTION FROM THEIR
45 DEGREE ANGLE.

SPRING LOCKED

Waterson® CORP.

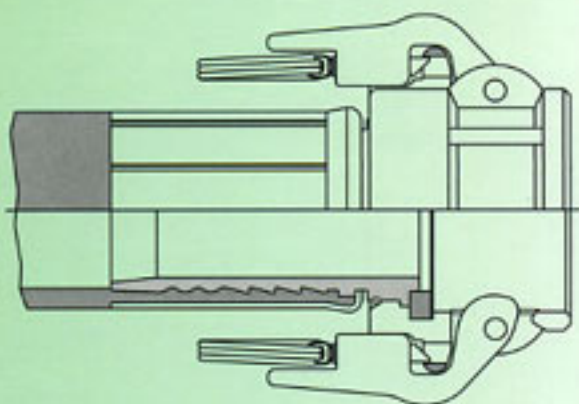
P.O. BOX 17-123, TAICHUNG, TAIWAN

Phone : 886-4-2265-3669, Fax : 886-4-2265-9431

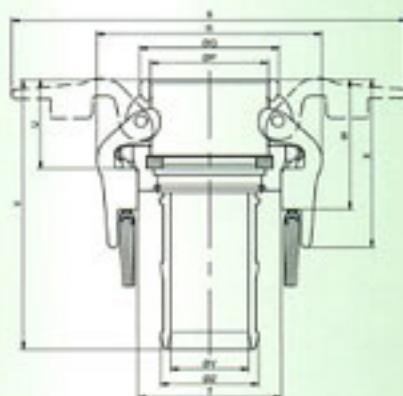
URL : www.waterson.com.tw E-Mail : office-tw@waterson.com.tw

**SAFLOK®**

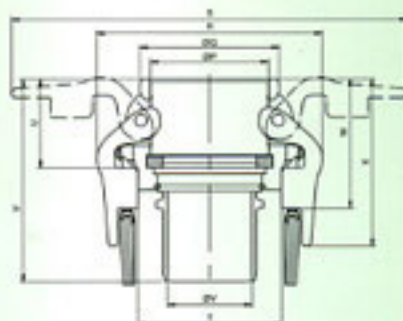
Self-Locking Swivel Quick Coupler



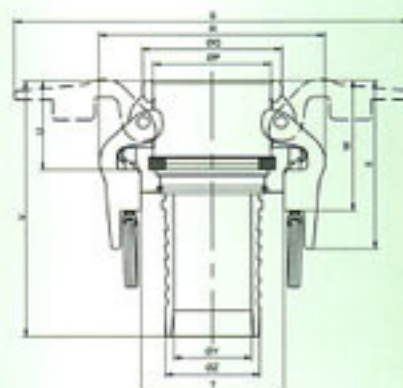
THE **NEW** PATENTED SAFLOK® COUPLER WITH 360° ROTATIONAL FEATURE.

**SAFLOK® -CLS (XX)(XX)**

SIZE	INCH mm	3/4"	1"	1 1/4"	1 1/2"	2"	2 1/2"	3"	4"
P	32	37	46	54	64	77	92	120	
Q	41	46	58	66	79	89	110	141	
R	83	91	105	113	122	134	154	182	
S	167	178	197	205	214	226	252	280	
T	41	49	60	68	77	89	110	138	
U	36	43	49	50	52	57	57	59	
V	92	105	111	129	147	144	167	177	
W	55	63	68	69	71	74	77	77	
X	76	83	90	90	92	95	98	98	
Y	14	20	25	32	50	56	67	89	
Z	22	27	34	40	53	67	79	105	

**SAFLOK® -CCS (XX)(XX)**

SIZE	INCH mm	3/4"	1"	1 1/4"	1 1/2"	2"	2 1/2"	3"	4"
P	32	37	46	54	64	77	92	120	
Q	41	46	58	66	79	89	110	141	
R	83	91	105	113	122	134	154	182	
S	167	178	197	205	214	226	252	280	
T	41	49	60	68	77	89	110	138	
U	36	43	49	50	52	57	57	59	
V	85	91	97	98	111	128	133	178	
W	55	63	68	69	71	74	77	77	
X	76	83	90	90	92	95	98	98	
Y	15	21	28	34	46	59	71	94	

**SAFLOK® -CSS (XX)(XX)**

SIZE	INCH mm	3/4"	1"	1 1/4"	1 1/2"	2"	2 1/2"	3"	4"
P	32	37	46	54	64	77	92	120	
Q	41	46	58	66	79	89	110	141	
R	83	91	105	113	122	134	154	182	
S	167	178	197	205	214	226	252	280	
T	41	49	60	68	77	89	110	138	
U	36	43	49	50	52	57	57	59	
V	86	100	105	109	140	143	152	180	
W	55	63	68	69	71	74	77	77	
X	76	83	90	90	92	95	98	98	
Y	14	20	25	32	50	56	67	89	
Z	20	26	32	38	50	64	77	102	

XX INDICATES THAT A METAL SELECTION MUST BE DESIGNATED WHEN ORDERING. THE FIRST XX OPTION IS FOR COUPLER BODY; THE SECOND IS FOR SHANK.

ALL STAINLESS STEEL COUPLERS COME WITH STAINLESS STEEL ARMS; BRONZE AND ALUMINUM COUPLERS COME WITH BRONZE ARMS UNLESS OTHERWISE REQUESTED.

Waterson® CORP.

P.O. BOX 17-123, TAICHUNG, TAIWAN

Phone : 886-4-2265-3669, Fax : 886-4-2265-9431

URL : www.waterson.com.tw E-Mail : office-tw@waterson.com.tw

SAFLOK® -A ADAPTOR (NPT, BSP, BSPT)



MM.	INCH
15	1/2
20	3/4
25	1
32	1 1/4
40	1 1/2
50	2
65	2 1/2
80	3
100	4

SAFLOK® -E ADAPTOR



MM.	INCH
15	1/2
20	3/4
25	1
32	1 1/4
40	1 1/2
50	2
65	2 1/2
80	3
100	4

SAFLOK® -B COUPLER (NPT, BSP, BSPT)



MM.	INCH
15	1/2
20	3/4
25	1
32	1 1/4
40	1 1/2
50	2
65	2 1/2
80	3
100	4

SAFLOK® -F ADAPTOR (NPT, BSP, BSPT)



MM.	INCH
15	1/2
20	3/4
25	1
32	1 1/4
40	1 1/2
50	2
65	2 1/2
80	3
100	4

SAFLOK® -C COUPLER



MM.	INCH
15	1/2
20	3/4
25	1
32	1 1/4
40	1 1/2
50	2
65	2 1/2
80	3
100	4

SAFLOK® -DC DUST CAP



MM.	INCH
15	1/2
20	3/4
25	1
32	1 1/4
40	1 1/2
50	2
65	2 1/2
80	3
100	4

SAFLOK® -D COUPLER (NPT, BSP, BSPT)



MM.	INCH
15	1/2
20	3/4
25	1
32	1 1/4
40	1 1/2
50	2
65	2 1/2
80	3
100	4

SAFLOK® -DP DUST PLUG



MM.	INCH
15	1/2
20	3/4
25	1
32	1 1/4
40	1 1/2
50	2
65	2 1/2
80	3
100	4

SAFLOK® -A ADAPTOR (NPT, BSP, BSPT)



MM.	INCH
15	1/2
20	3/4
25	1
32	1 1/4
40	1 1/2
50	2
65	2 1/2
80	3
100	4

SAFLOK® -E ADAPTOR



MM.	INCH
15	1/2
20	3/4
25	1
32	1 1/4
40	1 1/2
50	2
65	2 1/2
80	3
100	4

SAFLOK® -B COUPLER (NPT, BSP, BSPT)



MM.	INCH
15	1/2
20	3/4
25	1
32	1 1/4
40	1 1/2
50	2
65	2 1/2
80	3
100	4

SAFLOK® -F ADAPTOR (NPT, BSP, BSPT)



MM.	INCH
15	1/2
20	3/4
25	1
32	1 1/4
40	1 1/2
50	2
65	2 1/2
80	3
100	4

SAFLOK® -C COUPLER



MM.	INCH
15	1/2
20	3/4
25	1
32	1 1/4
40	1 1/2
50	2
65	2 1/2
80	3
100	4

SAFLOK® -DC DUST CAP



MM.	INCH
15	1/2
20	3/4
25	1
32	1 1/4
40	1 1/2
50	2
65	2 1/2
80	3
100	4

SAFLOK® -D COUPLER (NPT, BSP, BSPT)



MM.	INCH
15	1/2
20	3/4
25	1
32	1 1/4
40	1 1/2
50	2
65	2 1/2
80	3
100	4

SAFLOK® -DP DUST PLUG



MM.	INCH
15	1/2
20	3/4
25	1
32	1 1/4
40	1 1/2
50	2
65	2 1/2
80	3
100	4

Waterson® CORP.

P.O.BOX 17-123, TAICHUNG, TAIWAN

Phone : 886-4-2265-3669, Fax : 886-4-2265-9431

URL : www.waterson.com.tw E-Mail : office-tw@waterson.com.tw

THE SPECIAL FINGER RINGS
THAT WON'T GET TRAPPED
UNDER AN ARM, MAKING
SECURE CLOSING MUCH EASIER.

AUTOMATIC LOCKING IN A
COUPLER THAT WORKS JUST
LIKE A REGULAR QUICK COUPLER.

THE PATENTED LOCKING
CAM ARM GUARANTEED
FOR LIFE AGAINST
BREAKAGE.

Stainless steel **SAFLOK®** couplers and caps are available in the following sizes and configurations:

SAFLOK® Coupler and Caps	Available sizes are as per MIL-C-27487 and DIN - 2828.								
	1/2"	3/4"	1"	1 1/4"	1 1/2"	2"	2 1/2"	3"	4"
ISO									
DIN	15	20	25	32	40	50	65	80	100
SAFLOK - B Male B.S.P. NPT. PT.	•	•	•	•	•	•	•	•	•
SAFLOK - C Hose Shank		•	•	•	•	•	•	•	•
SAFLOK - CC DIN Hose Shank		•	•	•	•	•	•	•	•
SAFLOK - D Female B.S.P. NPT. PT.	•	•	•	•	•	•	•	•	•
SAFLOK - D DIN Female B.S.P.	•	•	•	•	•	•	•	•	•
SAFLOK - DC Dust Cap		•	•	•	•	•	•	•	•
SAFLOK - DW DIN Welding End		•	•	•	•	•	•	•	•

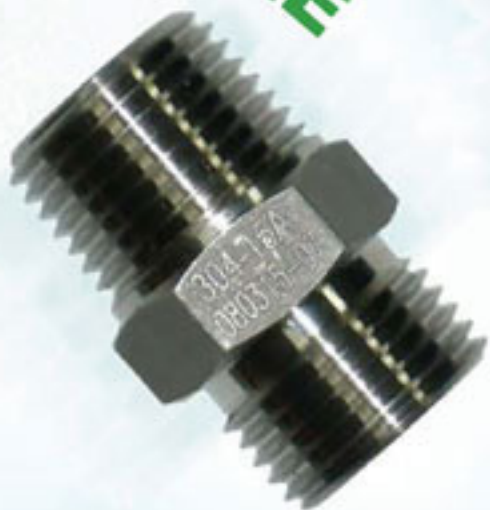
WE HAVE ALREADY WON THE FOLLOWING AWARDS IN THE WORLDWIDE:

1. Inpex XI Invention/New Product Exposition (1995) in USA
2. 24TH Salon International Des Inventions Geneve 1996
3. Golden Brain Award in the Nation-Wide Invention (Taiwan) 1996
4. Beijing International Exhibition of Invention (China) 1996
5. Japanese Good Design "G" Mark in 1995 Approved By Japan
6. Excellent Product Design Award in 1995 Approved
7. Small and Medium Enterprise Innovation Research Award 1995
8. Good Design Product 1995 Approved By CETDC

GOLD MEDAL
GOLD MEDAL
GOLD MEDAL
GOLD MEDAL



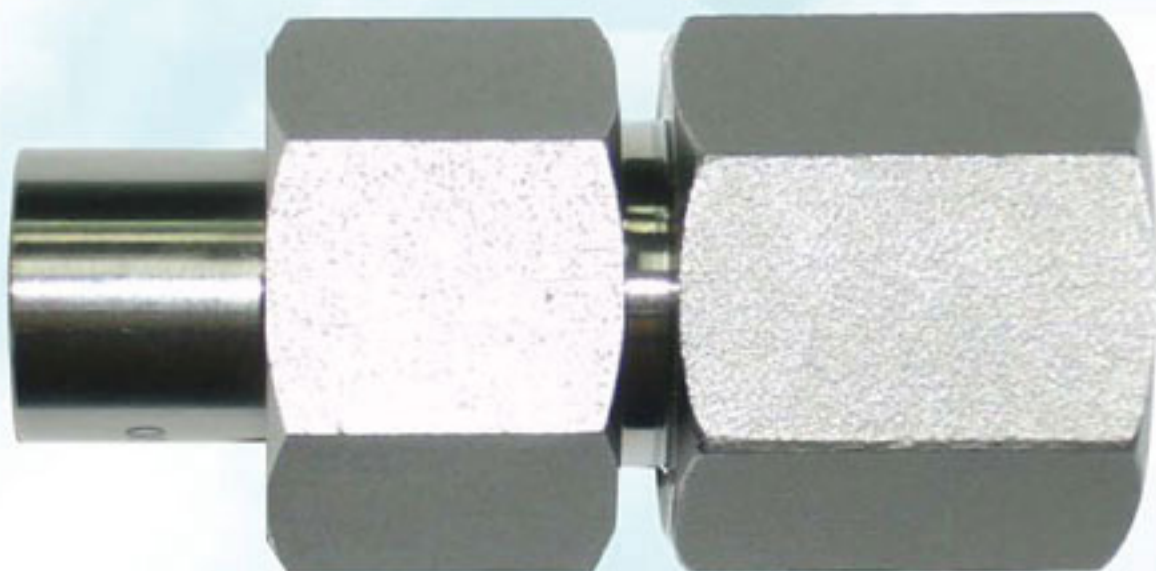
M-NIPPLE



F-SOCKET



NIPPLE



SLEEVE-H



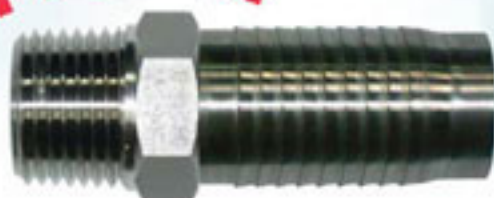
CUT NUT

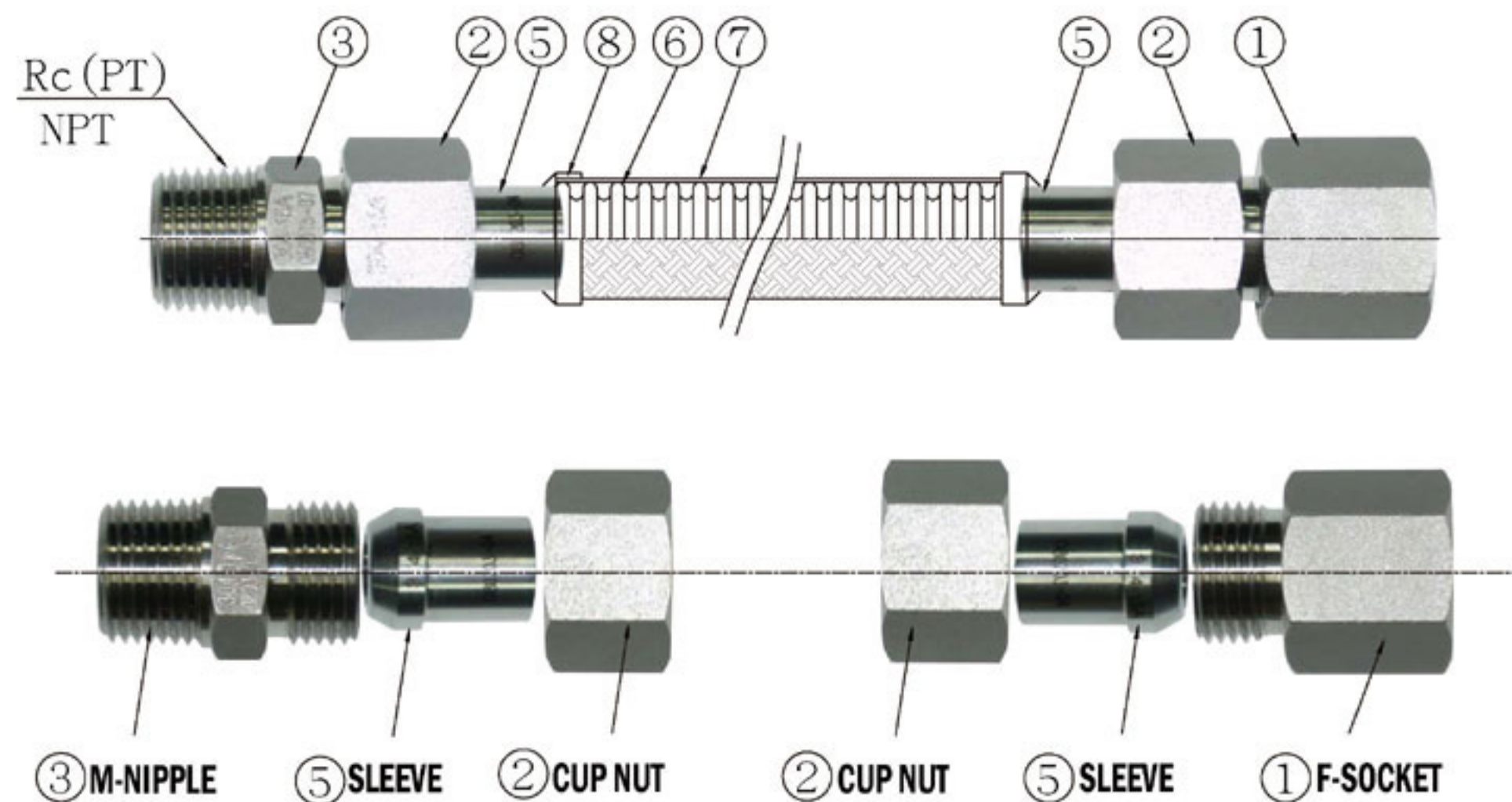


SLEEVE

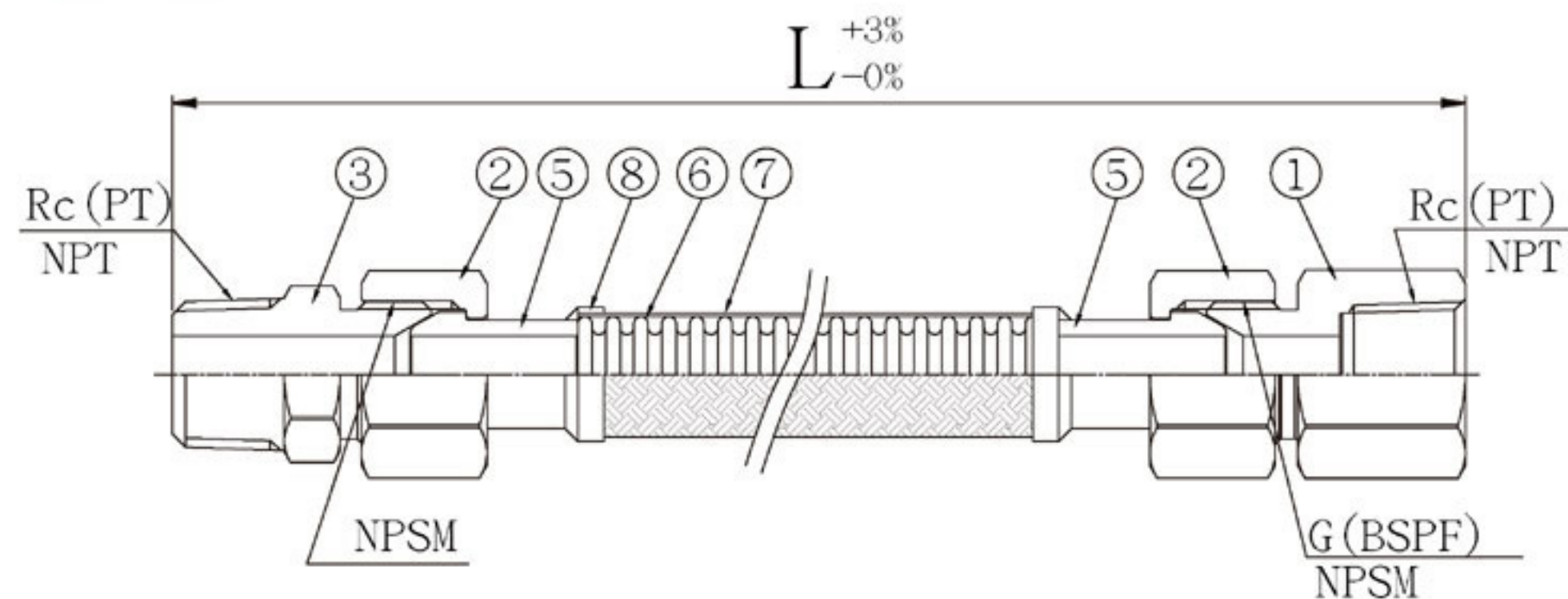


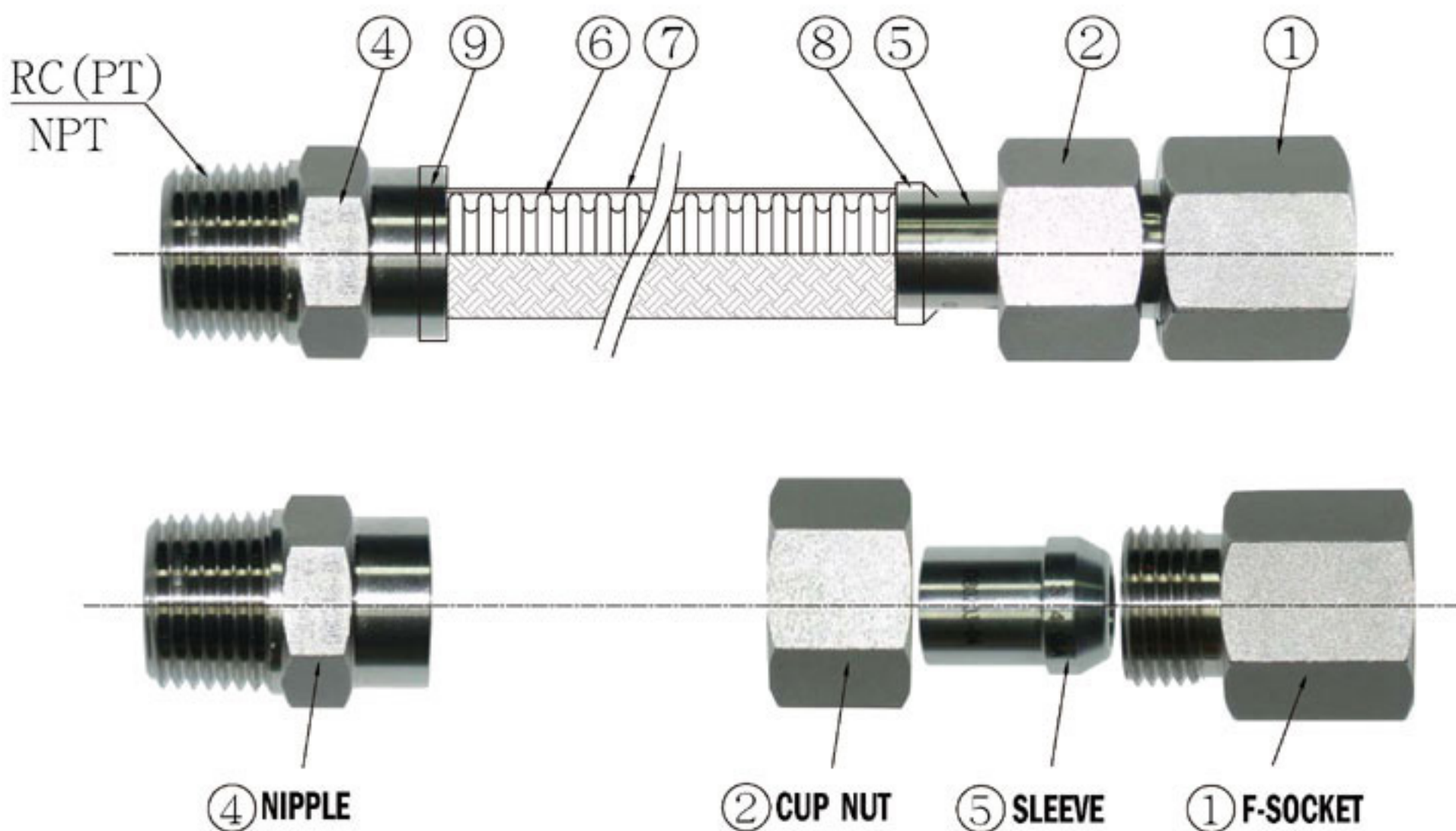
NIPPLE-H



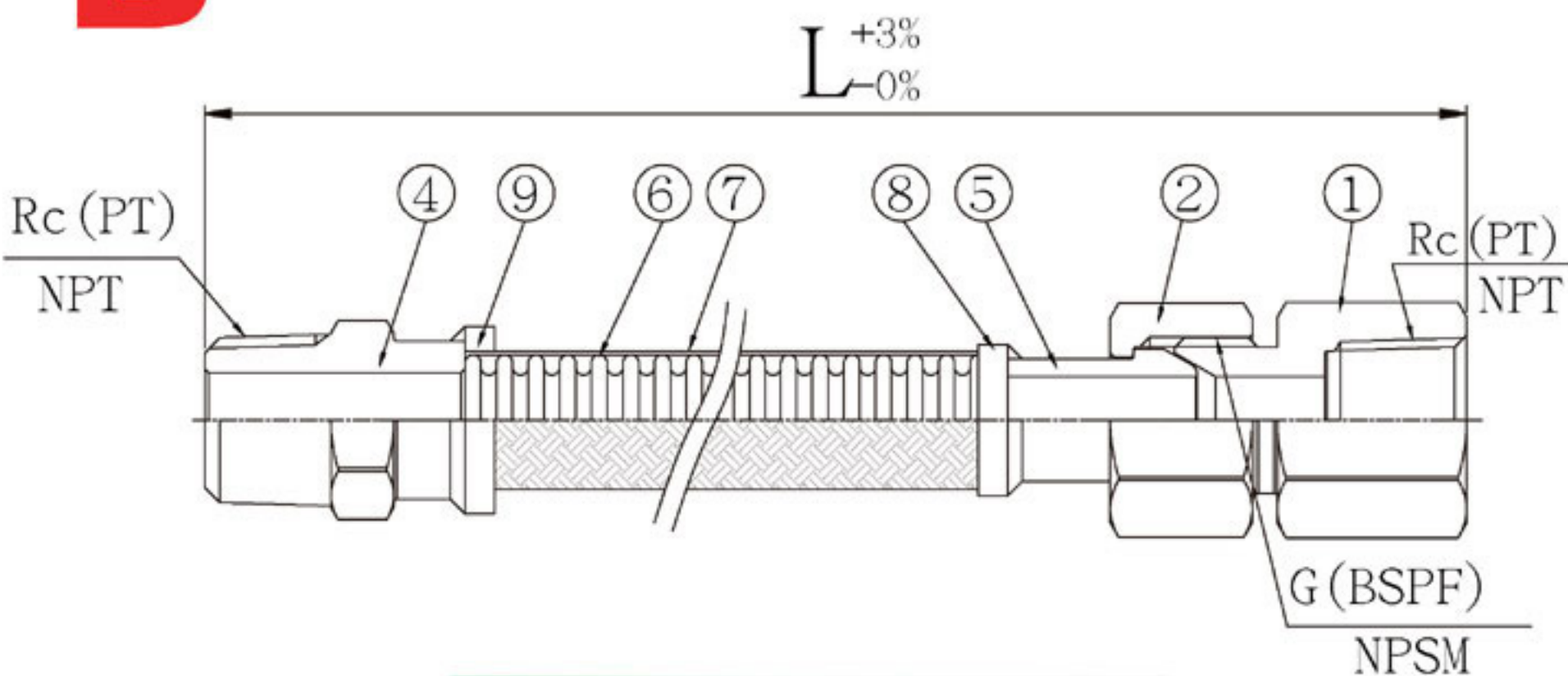


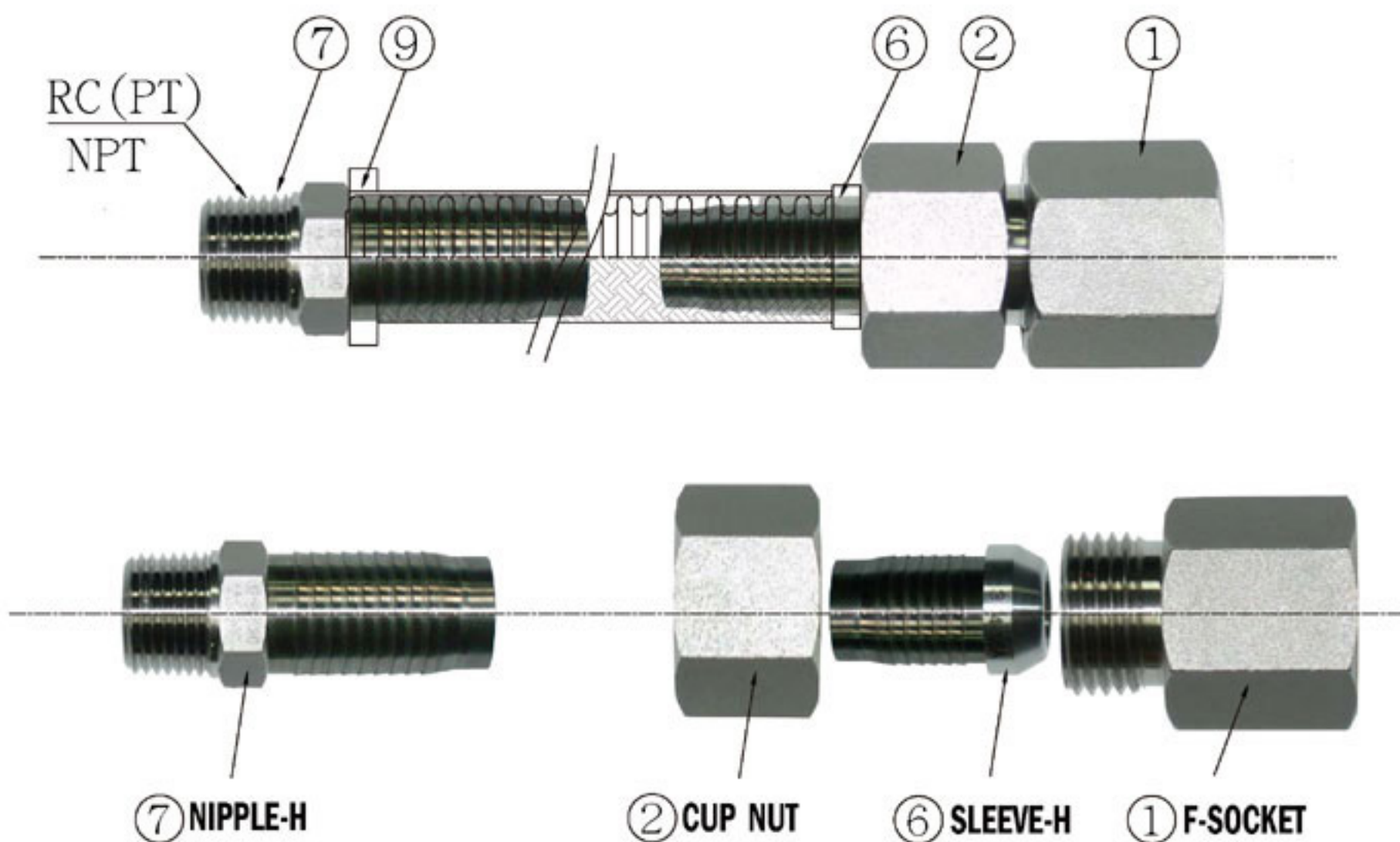
A



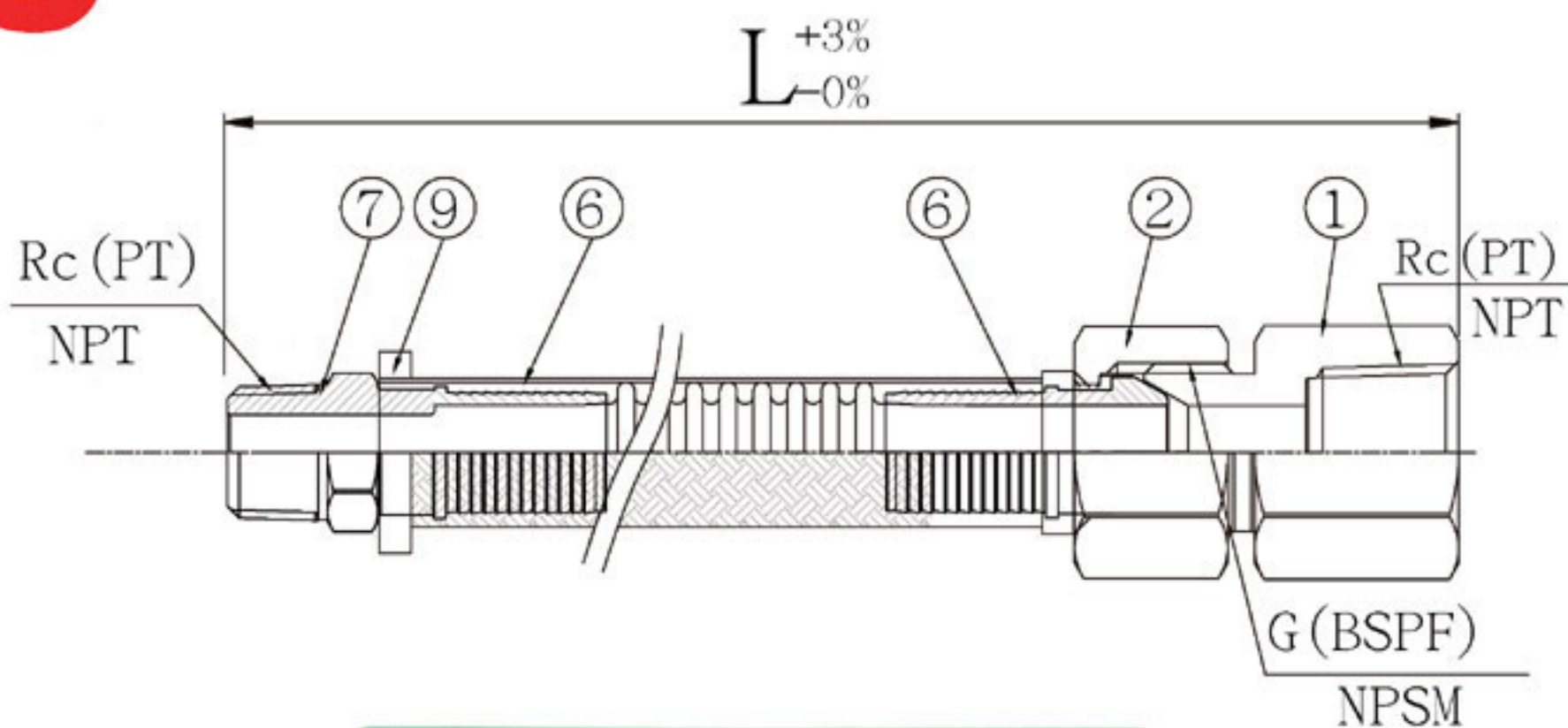


B

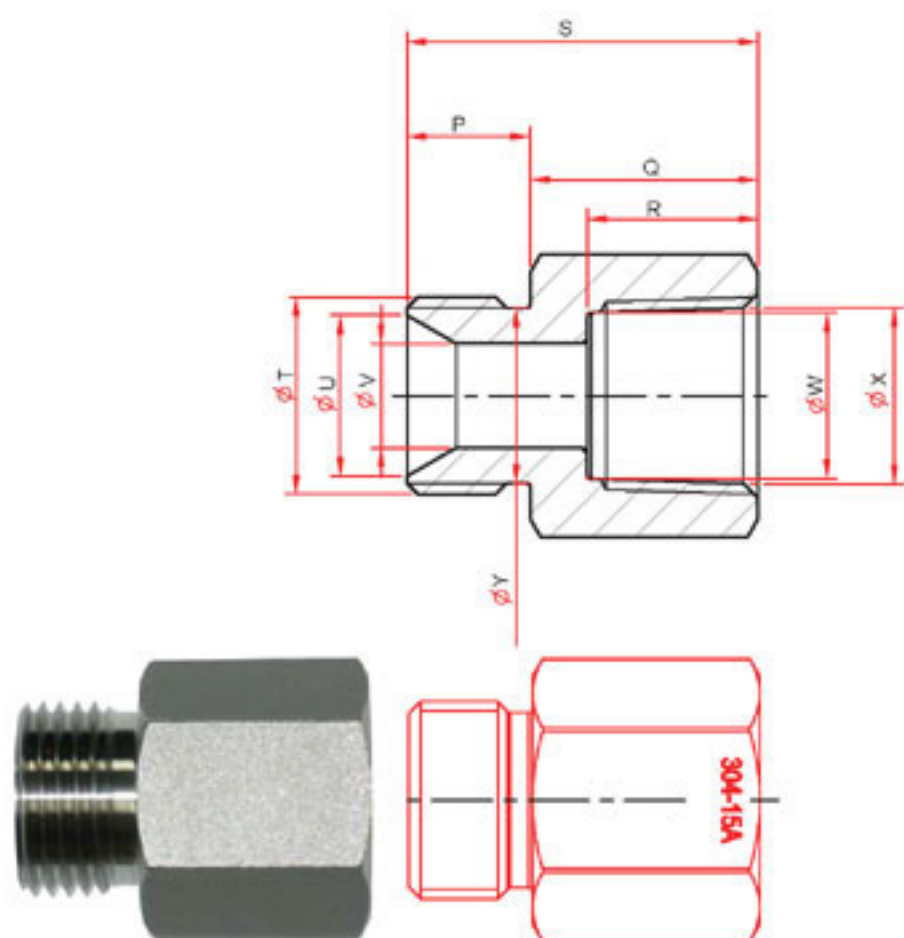




C

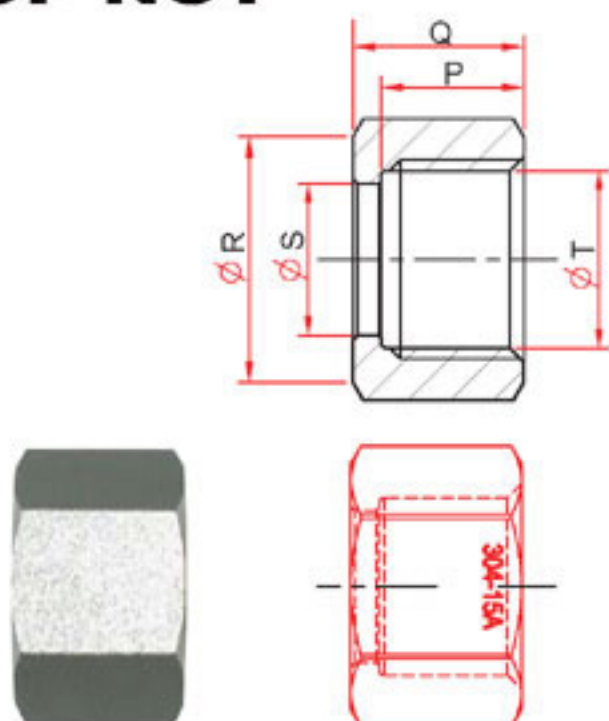


① F-SOCKET


F-SOCKET

SIZE	INCH mm	1/2" 15A	3/4" 20A	1" 25A	1 1/4" 32A	1 1/2" 40A	2" 50A
P		13	15	17	20	20	23
Q		24	25	27	32	33	40
R		18	21	23	25	27	30
S		37	40	44	52	53	63
T		21	26	33	42	47	59
U		17	23	28	37	42	54
V		11	15	20	28	32	43
W		18	23	29	37	43	55
X		19	24	30	39	45	57
Y		19	24	30	39	45	56

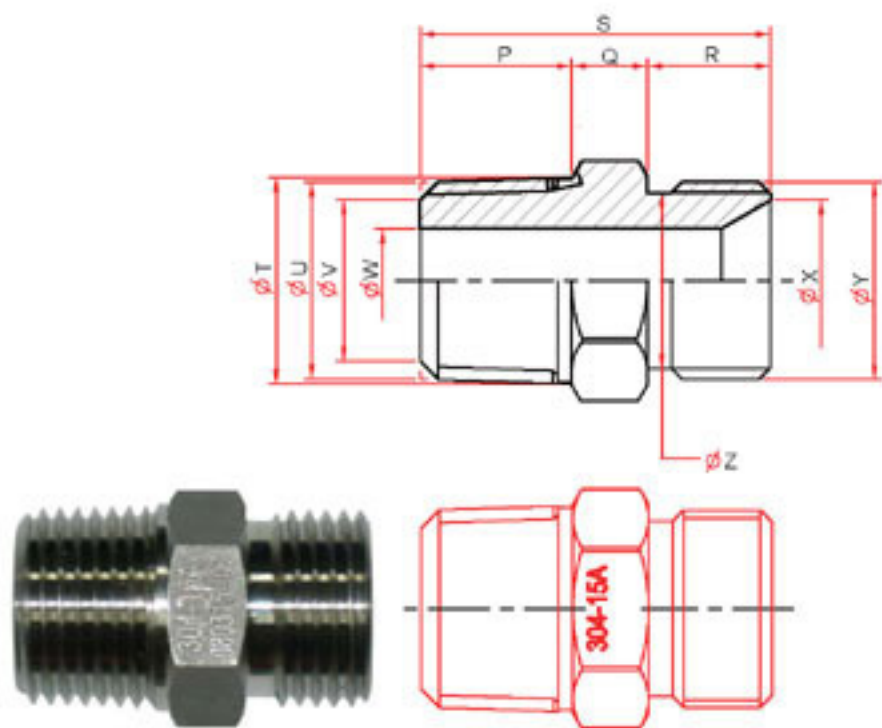
② CUP NUT


CUP NUT

SIZE	INCH mm	1/2" 15A	3/4" 20A	1" 25A	1 1/4" 32A	1 1/2" 40A	2" 50A
P		15	16	19	21	21	25
Q		18	20	24	26	26	30
R		26	32	38	50	55	70
S		16	21	27	35	42	53
T		19	24	30	39	45	57

③ M-NIPPLE

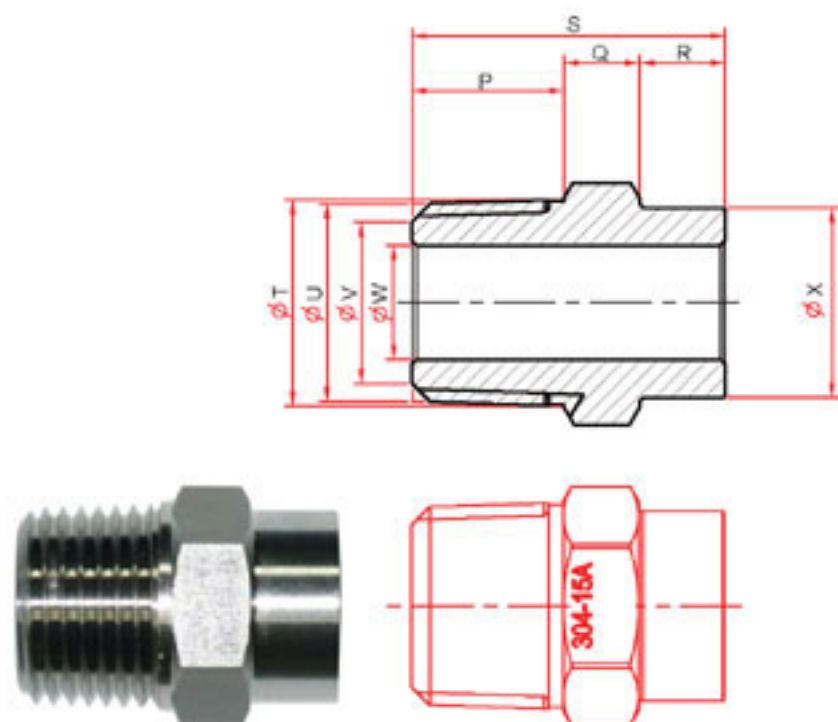
M-NIPPLE



SIZE	INCH mm	1/2" 15A	3/4" 20A	1" 25A	1 1/4" 32A	1 1/2" 40A	2" 50A
P		16	18	20	22	23	25
Q		8	7	7	10	10	15
R		13	15	17	20	20	23
S		37	40	44	52	53	63
T		22	27	34	43	49	60
U		21	26	33	41	47	59
V		17	23	28	36	42	54
W		11	15	20	28	32	43
X		17	23	28	37	42	54
Y		21	26	33	42	48	59
Z		19	24	30	39	45	56

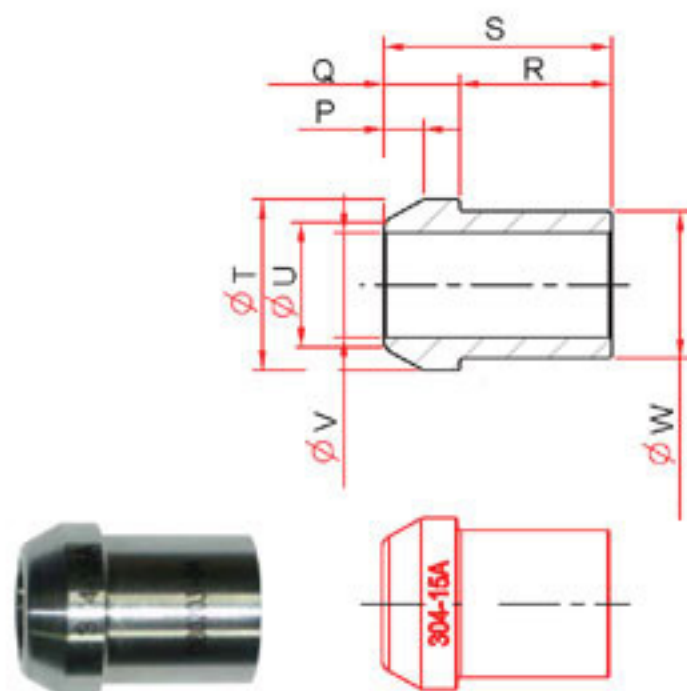
④ NIPPLE

NIPPLE



SIZE	INCH mm	1/2" 15A	3/4" 20A	1" 25A	1 1/4" 32A	1 1/2" 40A	2" 50A
P		16	18	20	23	24	28
Q		8	9	10	9	9	11
R		9	10	10	14	16	16
S		33	37	40	46	49	55
T		22	27	34	43	49	60
U		21	26	33	41	47	59
V		17	23	28	36	42	54
W		12	18	23	32	38	48
X		20	26	33	40	47	60

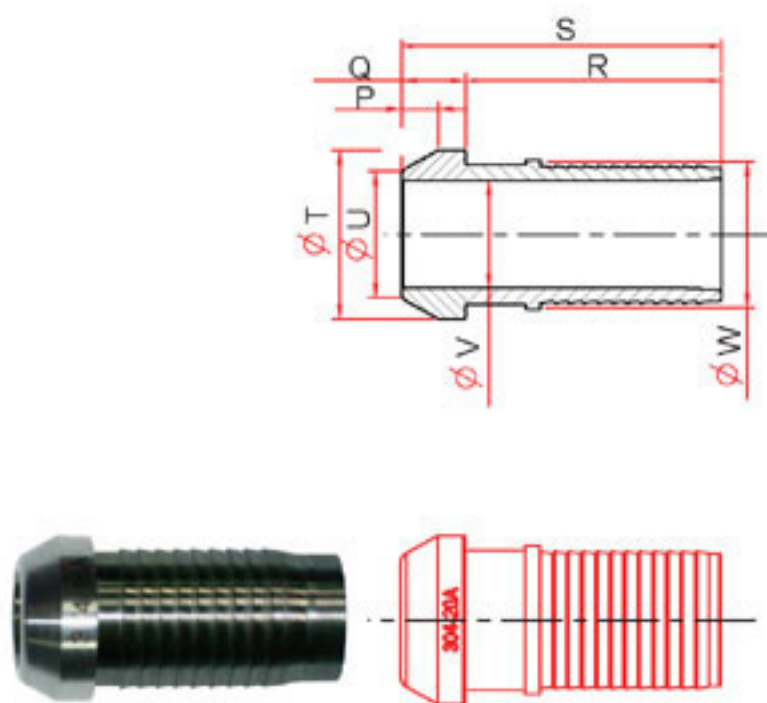
⑤ SLEEVE



SLEEVE

SIZE	INCH mm	1/2" 15A	3/4" 20A	1" 25A	1 1/4" 32A	1 1/2" 40A	2" 50A
P		4	5	7	7	7	8
Q		8	9	11	12	12	15
R		16	17	22	20	23	25
S		24	26	33	32	35	40
T		18	24	30	38	44	56
U		13	18	23	30	36	47
V		11	15	19	27	32	43
W		16	21	27	34	41	52

⑥ SLEEVE-H



SLEEVE-H

SIZE	INCH mm	1/2" 15A	3/4" 20A	1" 25A	1 1/4" 32A	1 1/2" 40A	2" 50A
P		4	5	7	7	7	8
Q		8	9	11	12	12	15
R		35	36	37	38	39	40
S		43	45	47	49	51	53
T		18	24	30	38	44	56
U		13	18	23	30	36	47
V		11	15	19	27	32	43
W		16	21	27	34	41	52