

SCREW HOSE COUPLINGS

STANDARD

LMC's screw hose couplings with a smooth hose shank comply with EN 14420-5 / DIN 2817.

OPERATION

Screw hose couplings are used to connect hoses with male or female BSP, BSPT or NPT threaded couplings. The hose shank can be divided in 3 types:

1. Screw hose couplings with a smooth hose shank are designed in compliance with EN 14420-5 / DIN 2817. The hose shank complies with EN 14420-2. The EN 14420-2 / DIN 2817 standard refers to coupling assemblies using RK safety clamps complying with EN 14420-3 / DIN 2817.
2. Screw hose couplings with serrated hose shank are used for worm drive clamp assemblies.
3. Screw hose couplings with serrated hose shank and collar can be used with worm drive clamps.
(Available on request)

The parallel BSP sealing thread used as standard in screw hose couplings complies with EN ISO 228-1. A pressure-tight joint is obtained by using a flat seal. LMC screw hose couplings are easy to assemble by hand or using a wrench.

N.B.: Screw hose couplings are not interchangeable with steam hose couplings, due to differences in application and overall dimensions.

APPLICATION

To connect rubber, thermoplastic and plastic hoses.

WORKING PRESSURE

16 bar / 232 psi

TEMPERATURE

-30°C / -22°F up to +300°C / 572°F

Hose, coupling, assembly method and seal must be chosen in relation with the desired application and temperature range.

MATERIAL

- Coupling
 - Stainless steel AISI 316 / 1.4401
 - Brass
- Seal
 - PU for brass screw hose couplings
 - PTFE for stainless steel screw hose couplings



SCREW HOSE COUPLINGS

ASSEMBLY

- RK and RKP safety clamps complying with EN 14420-3 / DIN 2817 and FLEXOLINE® safety clamps for screw hose couplings with smooth hose shank complying with EN 14420-2 / DIN 2817
- Worm drive clamps for screw hose couplings with serrated hose shank

THREAD

THREAD	DESCRIPTION	STANDARD	TYPICAL CALL OUT	SEALING METHOD	PROPERTIES
BSP	British standard pipe thread	EN ISO 228-1	G1	<ul style="list-style-type: none">■ Parallel thread■ Pressure tight joint is obtained using a seal or o-ring	<ul style="list-style-type: none">■ 55° degree thread angle■ Truncation of root and crest are round
BSPT	British standard pipe taper thread	EN 10226-1 DIN 2999-1	R1	<ul style="list-style-type: none">■ Conical thread.■ Pressure tight joint is achieved by the thread	<ul style="list-style-type: none">■ 55° degree thread angle■ Truncation of root and crest are round
NPT	National pipe taper thread <small>(American standard pipe thread)</small>	ANSI B 1.20.1	NPT 1	<ul style="list-style-type: none">■ Conical thread■ Pressure tight joint is achieved by the thread	<ul style="list-style-type: none">■ 60° degree round angle■ Truncation of root and crest are flat

Screw hose couplings with BSPT thread on request available.



SCREW HOSE COUPLINGS

MALE THREADED WITH SMOOTH HOSE SHANK

ND	Inch	For hose mm	Thread	Material	SW min. size mm	Weight pc/kg	Reference
15	1/2"	13	G 1/2	Brass	22	0.07	RM013
20	3/4"	19	G 3/4	Brass	27	0.10	RM019
25	1"	25	G 1	Brass	36	0.15	RM025
32	1.1/4"	32	G 1.1/4	Brass	46	0.26	RM032
40	1.1/2"	38	G 1.1/2	Brass	55	0.35	RM038
50	2"	50	G 2	Brass	65	0.46	RM050
65	2.1/2"	63	G 2.1/2	Brass	85	0.72	RM063
65	2.1/2"	65	G 2.1/2	Brass	85	0.72	RM065*
80	3"	75	G 3	Brass	100	0.91	RM075
80	3"	80	G 3	Brass	100	1.30	RM080*
100	4"	100	G 4	Brass	125	1.93	RM100

15	1/2"	13	G 3/4	Brass	27	0.10	RM013019
20	3/4"	19	G 1	Brass	36	0.14	RM019025
25	1"	25	G 1.1/4	Brass	46	0.27	RM025032
32	1.1/4"	32	G 1.1/2	Brass	55	0.28	RM032038
40	1.1/2"	38	G 2	Brass	65	0.35	RM038050
50	2"	50	G 2.1/2	Brass	85	0.56	RM050063
65	2.1/2"	63	G 3	Brass	100	0.78	RM063075

15	1/2"	13	NPT 1/2	Brass	22	0.07	RM013N
20	3/4"	19	NPT 3/4	Brass	27	0.10	RM019N
25	1"	25	NPT 1	Brass	36	0.20	RM025N
32	1.1/4"	32	NPT 1.1/4	Brass	46	0.30	RM032N
40	1.1/2"	38	NPT 1.1/2	Brass	55	0.44	RM038N
50	2"	50	NPT 2	Brass	65	0.78	RM050N
65	2.1/2"	63	NPT 2.1/2	Brass	85	1.10	RM063N
65	2.1/2"	65	NPT 2.1/2	Brass	85	1.10	RM065N*
80	3"	75	NPT 3	Brass	100	1.50	RM075N
80	3"	80	NPT 3	Brass	100	1.50	RM080N*
100	4"	100	NPT 4	Brass	125	3.15	RM100N

15	1/2"	13	G 1/2	SS	22	0.07	RRM013
20	3/4"	19	G 3/4	SS	27	0.10	RRM019
25	1"	25	G 1	SS	36	0.15	RRM025
32	1.1/4"	32	G 1.1/4	SS	46	0.21	RRM032
40	1.1/2"	38	G 1.1/2	SS	55	0.29	RRM038
50	2"	50	G 2	SS	65	0.43	RRM050
65	2.1/2"	63	G 2.1/2	SS	85	0.69	RRM063
65	2.1/2"	65	G 2.1/2	SS	85	0.69	RRM065*
80	3"	75	G 3	SS	100	0.91	RRM075
80	3"	80	G 3	SS	100	1.10	RRM080*
100	4"	100	G 4	SS	125	1.76	RRM100

15	1/2"	13	NPT 1/2	SS	22	0.08	RRM013N
20	3/4"	19	NPT 3/4	SS	27	0.11	RRM019N
25	1"	25	NPT 1	SS	36	0.18	RRM025N
32	1.1/4"	32	NPT 1.1/4	SS	46	0.25	RRM032N
40	1.1/2"	38	NPT 1.1/2	SS	55	0.37	RRM038N
50	2"	50	NPT 2	SS	65	0.48	RRM050N
65	2.1/2"	63	NPT 2.1/2	SS	85	0.73	RRM063N
65	2.1/2"	65	NPT 2.1/2	SS	85	0.73	RRM065N*
80	3"	75	NPT 3	SS	100	1.01	RRM075N
80	3"	80	NPT 3	SS	100	1.01	RRM080N*
100	4"	100	NPT 4	SS	125	1.84	RRM100N



Coupling standard: EN 14420-5 / DIN 2817

Hose shank standard: EN 14420-2 / DIN 2817

Male thread: EN ISO 228-1, BSP; ANSI B1.20.1, NPT

Assembly: RK and RKP safety clamps EN 14420-3 / DIN 2817, FLEXOLINE® safety clamps

SS = Stainless steel AISI 316 - 1.4401

Type of hexagon or octagon nut is subject to change without prior notice

* available on request

SCREW HOSE COUPLINGS

FEMALE THREADED WITH SMOOTH HOSE SHANK

ND	Inch	For hose mm	Thread EN ISO 228-1	Thread seal	Material	SW min. size mm	Weight pc/kg	Reference
15	1/2"	13	G 1/2	PU	Brass	24	0.06	RV013
20	3/4"	19	G 3/4	PU	Brass	30	0.10	RV019
25	1"	25	G 1	PU	Brass	36	0.13	RV025
32	1.1/4"	32	G 1.1/4	PU	Brass	46	0.20	RV032
40	1.1/2"	38	G 1.1/2	PU	Brass	55	0.38	RV038
50	2"	50	G 2	PU	Brass	65	0.42	RV050
65	2.1/2"	63	G 2.1/2	PU	Brass	85	0.68	RV063
65	2.1/2"	65	G 2.1/2	PU	Brass	85	0.68	RV065*
80	3"	75	G 3	PU	Brass	100	0.98	RV075
80	3"	80	G 3	PU	Brass	100	0.98	RV080*
100	4"	100	G 4	PU	Brass	125	3.60	RV100

15	1/2"	13	G 3/4	PU	Brass	30	0.07	RV013019
20	3/4"	19	G 1	PU	Brass	36	0.12	RV019025
25	1"	25	G 1.1/4	PU	Brass	46	0.19	RV025032
32	1.1/4"	32	G 1.1/2	PU	Brass	55	0.30	RV032038
38	1.1/2"	38	G 2	PU	Brass	65	0.40	RV038050
50	2"	50	G 2.1/2	PU	Brass	85	0.75	RV050063
63	2.1/2"	63	G 3	PU	Brass	100	1.04	RV063075

15	1/2"	13	G 1/2	PTFE	SS	24	0.10	RRV013
20	3/4"	19	G 3/4	PTFE	SS	30	0.15	RRV019
25	1"	25	G 1	PTFE	SS	36	0.16	RRV025
32	1.1/4"	32	G 1.1/4	PTFE	SS	46	0.18	RRV032
40	1.1/2"	38	G 1.1/2	PTFE	SS	55	0.29	RRV038
50	2"	50	G 2	PTFE	SS	5	0.44	RRV050
65	2.1/2"	63	G 2.1/2	PTFE	SS	85	0.75	RRV063
65	2.1/2"	65	G 2.1/2	PTFE	SS	85	0.75	RRV065*
80	3"	75	G 3	PTFE	SS	100	1.12	RRV075
80	3"	80	G 3	PTFE	SS	100	1.12	RRV080*
100	4"	100	G 4	PTFE	SS	125	3.90	RRV100

15	1/2"	13	G 1/2	PTFE	SS	30	0.14	RRV013019
20	3/4"	19	G 3/4	PTFE	SS	36	0.22	RRV019025
25	1"	25	G 1	PTFE	SS	46	0.38	RRV025032
32	1.1/4"	32	G 1.1/4	PTFE	SS	55	0.46	RRV032038
40	1.1/2"	38	G 1.1/2	PTFE	SS	65	0.62	RRV038050
50	2"	50	G 2	PTFE	SS	85	0.70	RRV050063
65	2.1/2"	63	G 2.1/2	PTFE	SS	100	0.85	RRV063075



Coupling standard: EN 14420-5 / DIN 2817

Hose shank standard: EN 14420-2 / DIN 2817

Female thread: EN ISO 228-1, BSP

Assembly: RK and RKP safety clamps EN 14420-3 / DIN 2817, FLEXOLINE® safety clamps

SS = Stainless steel AISI 316 - 1.4401

Type of screw nut is subject to change without prior notice

* available on request

SCREW HOSE COUPLINGS

MALE THREADED WITH SERRATED HOSE SHANK

ND	Inch	For hose mm	Thread EN ISO 228-1	Material	SW min. size mm	Weight pc/kg	Reference
15	1/2"	13	G 1/2	Brass	22	0.08	1R013
20	3/4"	19	G 3/4	Brass	27	0.11	1R019
25	1"	25	G 1	Brass	36	0.15	1R025
32	1.1/4"	32	G 1.1/4	Brass	46	0.26	1R032
40	1.1/2"	38	G 1.1/2	Brass	55	0.27	1R038
50	2"	50	G 2	Brass	65	0.50	1R050
65	2.1/2"	63	G 2.1/2	Brass	85	0.92	1R065
80	3"	75	G 3	Brass	100	1.00	1R075
80	3"	80	G 3	Brass	100	0.89	1R080*
100	4"	100	G 4	Brass	125	1.89	1R100
15	1/2"	13	G 3/4	Brass	27	0.12	1R013019
20	3/4"	19	G 1	Brass	36	0.17	1R019025
25	1"	25	G 1.1/4	Brass	46	0.24	1R025032
32	1.1/4"	32	G 1.1/2	Brass	55	0.36	1R032038
40	1.1/2"	38	G 2	Brass	65	0.51	1R038050
50	2"	50	G 2.1/2	Brass	85	0.75	1R050065
65	2.1/2"	63	G 3	Brass	100	0.83	1R065075
15	1/2"	13	G 1/2	SS	22	0.07	R1R013
20	3/4"	19	G 3/4	SS	27	0.10	R1R019
25	1"	25	G 1	SS	36	0.16	R1R025
32	1.1/4"	32	G 1.1/4	SS	46	0.30	R1R032
40	1.1/2"	38	G 1.1/2	SS	55	0.38	R1R038
50	2"	50	G 2	SS	65	0.54	R1R050
65	2.1/2"	63	G 2.1/2	SS	85	0.87	R1R065
80	3"	75	G 3	SS	95	0.96	R1R075
80	3"	80	G 3	SS	95	0.70	R1R080*
100	4"	100	G 4	SS	100	1.84	R1R100



Male thread EN ISO 228-1, BSP

Assembly: worm drive clamps

SS = Stainless steel AISI 316 - 1.4401

Type of hexagon or octagon is subject to change without prior notice

* available on request

SCREW HOSE COUPLINGS

FEMALE THREADED SWIVEL WITH SERRATED HOSE SHANK

ND	Inch	For hose mm	Thread EN ISO 228-1	Thread seal	Material	Socket wrench min. size mm	Weight kg/pc	Reference
15	1/2"	13	G 1/2	PU	Brass	24	0.05	2R013
20	3/4"	19	G 3/4	PU	Brass	30	0.07	2R019
25	1"	25	G 1	PU	Brass	36	0.09	2R025
32	1.1/4"	32	G 1.1/4	PU	Brass	46	0.16	2R032
40	1.1/2"	38	G 1.1/2	PU	Brass	55	0.20	2R038
50	2"	50	G 2	PU	Brass	65	0.31	2R050
65	2.1/2"	63	G 2.1/2	PU	Brass	85	0.55	2R065
80	3"	75	G 3	PU	Brass	100	0.54	2R075
80	3"	80	G 3	PU	Brass	100	0.61	2R080*
100	4"	100	G 4	PU	Brass	125	1.89	2R100

20	3/4"	19	G 1	PU	Brass	36	0.18	2R019025
25	1"	25	G 1.1/4	PU	Brass	46	0.32	2R025032
32	1.1/4"	32	G 1.1/2	PU	Brass	55	0.54	2R032038
40	1.1/2"	38	G 2	PU	Brass	65	0.72	2R038050
50	2"	50	G 2.1/2	PU	Brass	85	0.86	2R050065
65	2.1/2"	63	G 3	PU	Brass	100	1.13	2R065075

15	1/2"	13	G 1/2	PTFE	SS	24	0.09	R2R013
20	3/4"	19	G 3/4	PTFE	SS	30	0.10	R2R019
25	1"	25	G 1	PTFE	SS	36	0.16	R2R025
32	1.1/4"	32	G 1.1/4	PTFE	SS	46	0.20	R2R032
40	1.1/2"	38	G 1.1/2	PTFE	SS	55	0.39	R2R038
50	2"	50	G 2	PTFE	SS	65	0.44	R2R050
65	2.1/2"	63	G 2.1/2	PTFE	SS	85	0.82	R2R065
80	3"	75	G 3	PTFE	SS	100	0.94	R2R075
80	3"	80	G 3	PTFE	SS	100	0.91	R2R080*
100	4"	100	G 4	PTFE	SS	125	2.30	R2R100



Female thread EN ISO 228-1, BSP

Assembly: worm drive clamps

SS = Stainless steel AISI 316 - 1.4401

Type of screw nut is subject to change without prior notice

* available on request

SCREW HOSE COUPLINGS

MALE THREADED WITH HELICAL HOSE SHANK FOR COMPOSITE HOSE

ND	Inch	For hose mm	Thread EN ISO 228-1	Material	Weight pc/ Kg	Reference
25	1"	25	G 1	Brass	0.20	CM1R025
32	1.1/4"	32	G 1 1/4	Brass	0.38	CM1R032
40	1.1/2"	40	G 1 1/2	Brass	0.52	CM1R040
50	2"	50	G 2	Brass	0.77	CM1R050
65	2.1/2"	65	G 2 1/2	Brass	1.51	CM1R065
80	3"	80	G 3	Brass	1.82	CM1R080
100	4"	100	G 4	Brass	2.15	CM1R100
25	1"	25	G 1	SS	0.19	CR1R025
32	1.1/4"	32	G 1 1/4	SS	0.35	CR1R032
40	1.1/2"	40	G 1 1/2	SS	0.48	CR1R040
50	2"	50	G 2	SS	0.81	CR1R050
65	2.1/2"	65	G 2 1/2	SS	1.26	CR1R065
80	3"	80	G 3	SS	1.56	CR1R080
100	4"	100	G 4	SS	2.11	CR1R100



Male thread EN ISO 228-1, BSP

Assembly: swage ferrules for composite hoses

SS = Stainless steel AISI 316 - 1.4401

Type of hexagon or octagon nut is subject to change without prior notice

Aluminium available on request

FEMALE THREADED WITH HELICAL HOSE SHANK FOR COMPOSITE HOSE

ND	Inch	For hose mm	Thread EN ISO 228-1	Thread seal	Material	Weight pc/ Kg	Reference
25	1"	25	G 1	PU	Brass	0.26	CM2R025
32	1.1/4"	32	G 1 1/4	PU	Brass	0.44	CM2R032
40	1.1/2"	40	G 1 1/2	PU	Brass	0.60	CM2R040
50	2"	50	G 2	PU	Brass	0.82	CM2R050
65	2.1/2"	65	G 2 1/2	PU	Brass	1.66	CM2R065
80	3"	80	G 3	PU	Brass	2.20	CM2R080
25	1"	25	G 1	PTFE	SS	0.35	CR2R025
32	1.1/4"	32	G 1 1/4	PTFE	SS	0.59	CR2R032
40	1.1/2"	40	G 1 1/2	PTFE	SS	0.76	CR2R040
50	2"	50	G 2	PTFE	SS	0.96	CR2R050
65	2.1/2"	65	G 2 1/2	PTFE	SS	1.92	CR2R065
80	3"	80	G 3	PTFE	SS	2.51	CR2R080



Female thread EN ISO 228-1, BSP

Assembly: swage ferrules for composite hoses

SS = Stainless steel AISI 316 - 1.4401

Type of screw nut is subject to change without prior notice

Aluminium available on request

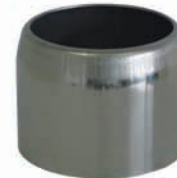
SCREW HOSE COUPLINGS

SWAGE FERRULE FOR HELICAL HOSE SHANK AND COMPOSITE HOSE

ND	Inch	Material	Ø ID mm +/- coupling side	Ø ID mm +/- hose side	Length mm +/-	Weight/pc kg	Reference
25	1"	Stainless steel	27.7	42.0	42.0	0.09	CHR025
32	1.1/4"	Stainless steel	36.0	50.0	42.5	0.11	CHR032
40	1.1/2"	Stainless steel	45.0	57.0	60.0	0.13	CHR040
50	2"	Stainless steel	53.6	65.7	67.0	0.15	CHR050
65	2.1/2"	Stainless steel	68.1	83.0	73.0	0.24	CHR065
80	3"	Stainless steel	84.6	98.0	76.2	0.24	CHR080
100	4"	Stainless steel	107.5	124.0	107.0	0.63	CHR100
40	1.1/2"	Aluminium	45.0	57.0	60.0	0.05	CHA040
50	2"	Aluminium	53.6	65.7	67.0	0.07	CHA050
65	2.1/2"	Aluminium	68.1	83.0	73.0	0.09	CHA065
80	3"	Aluminium	84.6	98.0	76.2	0.14	CHA080

Stainless steel AISI 304 - 1.4301

Steel swage ferrules on request available



CRIMPING SEAL FOR HELICAL SHANK COUPLING

ND	Inch	Material	Colour	Ø OD +/- 2mm	Ø ID +/- 1mm	Weight/pc kg	Reference
25	1"	NBR	Black	41.5	25.5	0.005	CXN025
32	1.1/4"	NBR	Black	48.0	32.5	0.008	CXN032
40	1.1/2"	NBR	Black	58.0	38.0	0.01	CXN040
50	2"	NBR	Black	65.5	50.0	0.02	CXN050
65	2.1/2"	NBR	Black	84	65.0	0.03	CXN065
80	3"	NBR	Black	100	80.0	0.04	CXN080
100	4"	NBR	Black	112.5	100.0	0.07	CXN100

EPDM / FPM available on request



SCREW HOSE COUPLINGS

THREAD SEAL - PTFE

ND	Inch	OD Ø mm	ID Ø mm	Height mm	Weight/pc kg	Reference
15	1/2"	20.0	13.0	1.5	0.001	X2RP013
20	3/4"	26.0	19.0	1.5	0.001	X2RP020
25	1"	33.0	24.0	2.0	0.002	X2RP025
32	1.1/4"	42.0	33.0	2.0	0.002	X2RP032
40	1.1/2"	48.0	39.0	2.0	0.003	X2RP038
50	2"	60.0	49.0	2.0	0.004	X2RP050
65	2.1/2"	76.0	63.0	2.5	0.006	X2RP065
80	3"	88.0	77.0	3.0	0.010	X2RP075
100	4"	114.0	100.0	3.0	0.015	X2RP100



Material: PTFE

Colour: White

Seal dimensions in compliance with EN 14420-5

See chapter E for more information regarding chemical resistance

THREAD SEAL - PU

ND	Inch	OD Ø mm	ID Ø mm	Height mm	Weight/pc kg	Reference
15	1/2"	20.0	13.0	1.5	0.001	X2RV013
20	3/4"	26.0	19.0	1.5	0.001	X2RV020
25	1"	33.0	24.0	2.0	0.001	X2RV025
32	1.1/4"	42.0	33.0	2.0	0.001	X2RV032
40	1.1/2"	48.0	39.0	2.0	0.001	X2RV038
50	2"	60.0	49.0	2.0	0.002	X2RV050
65	2.1/2"	76.0	63.0	2.5	0.003	X2RV065
80	3"	88.0	77.0	3.0	0.005	X2RV075
100	4"	114.0	100.0	3.0	0.008	X2RV100



Material: PU

Colour: Brown

Seal dimensions in compliance with EN 14420-5

See chapter E for more information regarding chemical resistance