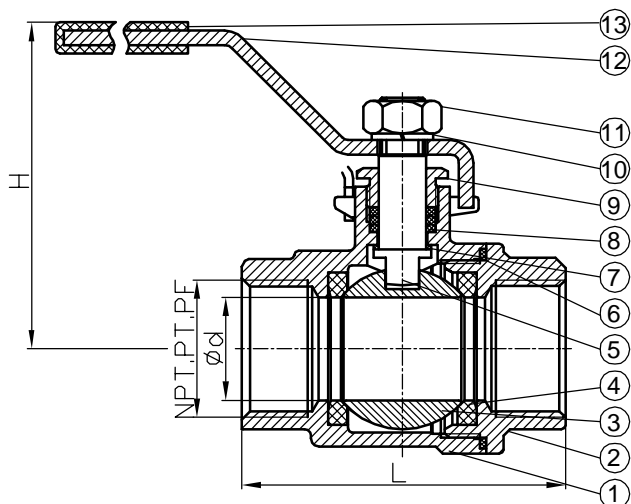
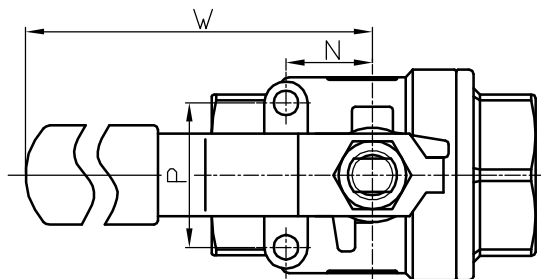
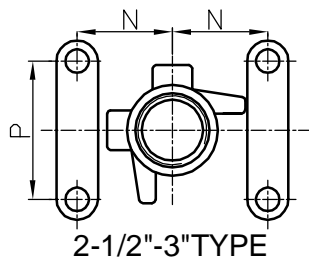


FULL PORT TWO-PIECE
BALL VALVE SCREWED
END 1000W.O.G./PN63

V2-63BSP S45C A216 Gr-WCB DIN1.0619

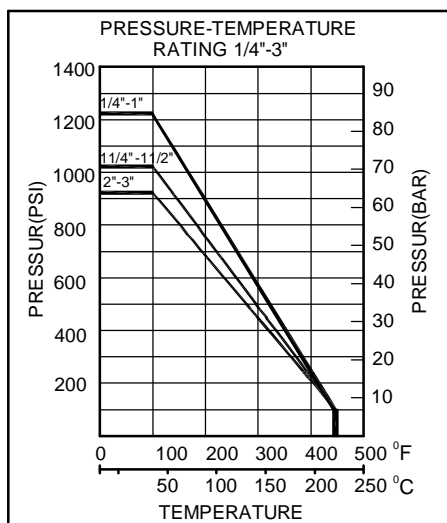


FEATURES:

- PIPE THREAD IN ACCORDANCE: NPT, BSPT, DIN259, DIN2999, ISO 228 CLASS A
- BLOW-OUT PROOF STEM / FULL PORT
- INVESTMENT CASTING BODY
- 1000PSI(PN63)W.O.G.

MATERIALS LIST:

NO.	PART NAME	MATERIAL
1	BODY	WCB
2	CAP	WCB
3	BALL	CF8
4	SEAT	PTFE
5	STEM	SUS304
6	GASKET	PTFE
7	THRUST WASHER	PTFE
8	PACKING	PTFE
9	GLAND	SUS304
10	SPRING WASHER	SUS304
11	STEM NUT	SUS304
12	HANDLE	SUS304
13	PLASTIC COVER	PLASTIC



DIMENSIONS:

SIZE		d	L	H	W	N	P	Cv FACTOR	TORQUE N.M	WEIGHT Kg
DN	NPS									
8	1/4"	11.6	52	56	102	12.7	28.5	6.0	3.0	0.28
10	3/8"	12.7	52	56	102	12.7	28.5	7.0	3.0	0.23
15	1/2"	15	58	65	123	12.7	28.5	10	4.0	0.34
20	3/4"	20	67	68	123	21	35	25	7.5	0.50
25	1"	25	78	79	153	21	35	35	10	0.68
32	1 1/4"	32	90	84	153	23.5	38	46	12	1.12
40	1 1/2"	40	104	93	183	23.5	38	80	15	1.84
50	2"	50	127	99	183	23.5	38	110	25	2.98
65	2 1/2"	65	158	136	246	35	54	310	38	5.17
80	3"	80	187	146	246	35	54	360	72	9.92