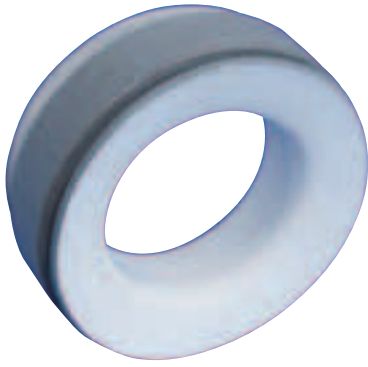


# SPACERS



Shape G

LININGS

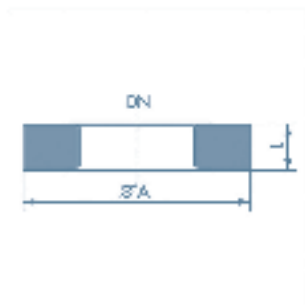
**VIRGIN PTFE :**  
DN 15 – DN 600

**ANTI STATIC PTFE, C4 =A :**  
DN 15 – DN 400

DN	ØA (mm)	F (mm)	G (mm)		H (mm)		REFERENCE															
			L mini	L maxi	L mini	L maxi	1	2	3	4	5	6	7	8	9	10	11	12	13	14	15	16
15	51	20	15	50	50	85	D	1	-	-	•	-	x	x	x	H						
20	60	20	15	50	50	85	D	1	-	-	•	-	x	x	x	J						
25	70	20	15	50	50	85	D	1	-	-	•	-	x	x	x	K						
32	82	20	15	60	60	85	D	1	-	-	•	-	x	x	x	L						
40	92	20	15	60	60	90	D	1	-	-	•	-	x	x	x	M						
50	107	20	15	60	60	100	D	1	-	-	•	-	x	x	x	N						
65	127	20	15	60	60	100	D	1	-	-	•	-	x	x	x	O						
80	142	20	15	60	60	110	D	1	-	-	•	-	x	x	x	P						
100	162	20	15	60	60	113	D	1	-	-	•	-	x	x	x	Q						
125	192	20	15	60	60	117	D	1	-	-	•	-	x	x	x	R						
150	218	20	20	60	60	117	D	1	-	-	•	-	x	x	x	S						
200	273	20	20	70	70	130	D	1	-	-	•	-	x	x	x	T						
250	328	20	20	70	70	143	D	1	-	-	•	-	x	x	x	U						
300	378	20	20	70	70	143	D	1	-	-	•	-	x	x	x	V						
350	438	20	20	70	70	143	D	1	-	-	•	-	x	x	x	W						
400	488	20	20	80	80	147	D	1	-	-	•	-	x	x	x	X						
450	539	20	20	80	80	147	D	1	-	-	•	-	x	x	x	Y						
500	594	20	20	80	80	156	D	1	-	-	•	-	x	x	x	Z						
600	695	20	20	80	80	172	D	1	-	-	•	-	x	x	x	B						

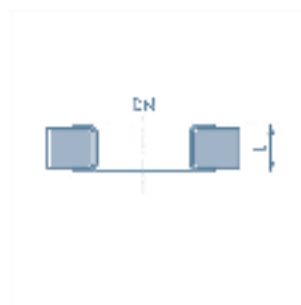
- = F : Spacers shape F
- = G : Spacers shape G
- = E : Spacers shape H
- xxxx : length in mm

Massive PTFE spacer



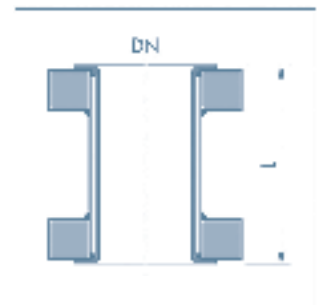
Shape F

Steel lined spacer



Shape G

Tube lined spacer



Shape H