

3-PC HIGH PERFORMANCE FULL BORE BALL VALVE ISO 5211 DIRECT-MOUNTED PAD

Working Pressure : 2000psi / PN140 bar
Size Range : 1/2" ~ 4" (DN15 ~ DN100)
Temperature Range : -20 to 180° C (-4 to 356° F)



Application Standards:

Body Material	ASTM A216 WCB / ASTM A351 CF8 / ASTM A351 CF8M
Seat	RTFE
Pressure	2000psi
Connections	BS21(BSP), BSPT, ISO228-1, DIN2999, ISO7-1Rp, B1.20.1 NPT, B16.11 Socket Weld, B16.25 Butt Weld
Specifications	Body wall thickness : ASME B16.34 Face to Face : Manufacturer's Standard
Valve Test	API 598

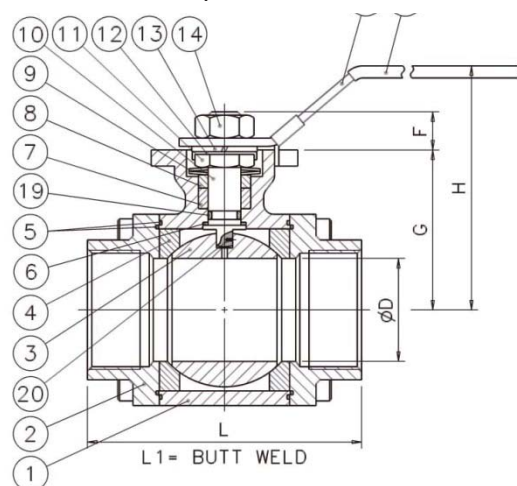
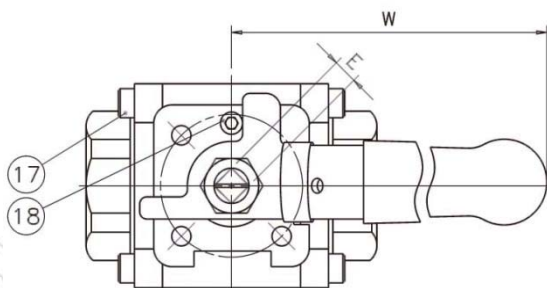
Features:

3-pc high performance design
Blow-out-proof stem & Anti-static Device
High Quality Investment Casting (Wax Injection Procedure)
In-line Replacement to swing-out-the caps and replaced the internal parts without disturbing alignment of pipeline
Industrial Service for severe conditions such as slurry, pulp, solid containing fluids, high temperature.
ISO 5211 Direct-Mounted pad for actuation design
API607 Fire Safe is optional

Spare Parts:

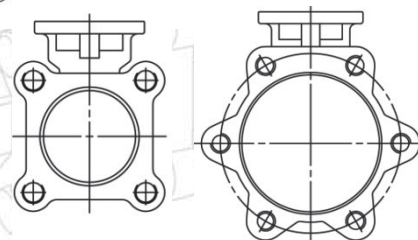
Size: 1/4"~1 1/2"

- ④- Seat
- ⑤- Body Seal
- ⑥- Thrust Washer
- ⑦- Stem Packing



DIMENSIONS:

SIZE		ØD		L		L1		E		F		G		H		W		ØA	ØB	C		ISO 5211	Weights KG		
IN	DN	IN	MM	IN	MM	IN	MM	IN	MM	IN	MM	IN	MM	IN	MM	IN	MM			IN	MM				
1/4"	8	0.43	11.0	2.55	65	2.75	70	0.35	9	0.31	8	1.47	37.5	2.75	70	5.51	140	0.54	13.8	0.56	14.2	0.39	10	F04	1.0
3/8"	10	0.43	11.0	2.55	65	2.75	70	0.35	9	0.31	8	1.47	37.5	2.75	70	5.51	140	0.68	17.3	0.69	17.6	0.39	10	F04	1.0
1/2"	15	0.55	14.0	2.95	75	2.95	75	0.35	9	0.31	8	1.47	37.5	2.75	70	5.51	140	0.85	21.7	0.86	21.8	0.51	13	F04	1.1
3/4"	20	0.80	20.5	3.14	80	3.54	90	0.43	11	0.43	11	1.97	50.0	3.54	90	7.08	180	1.07	27.2	1.07	27.2	0.51	13	F04-F05	1.2
1"	25	0.98	25.0	3.54	90	3.93	100	0.43	11	0.43	11	2.36	60.0	3.93	100	7.08	180	1.34	34.0	1.33	33.9	0.59	15	F04-F05	2.1
1 1/4"	32	1.24	31.5	4.33	110	4.33	110	0.55	14	0.63	16	2.83	72.0	4.40	112	8.46	215	1.68	42.7	1.68	42.7	0.59	15	F07	3.3
1 1/2"	40	1.45	37.0	4.72	120	4.92	125	0.55	14	0.63	16	2.99	76.0	4.52	115	8.46	215	1.91	48.6	1.92	48.8	0.63	16	F07	4.5
2"	50	1.96	50.0	5.51	140	5.90	150	0.55	14	0.63	16	3.66	93.0	5.23	133	8.46	215	2.38	60.5	2.41	61.2	0.63	16	F07	7.2



1/2" ~ 1-1/2"

2"

Terofox Valve Integrated Corp.,

A Valve Solution Provider In Taiwan

Terofox Valves Integrated Corp.

Website: www.terofox.com Email: info@terofox.com

Tel: +886-4-22655306

Fax: +886-4-22650723

3-PC HIGH PERFORMANCE FULL BORE BALL VALVE ISO 5211 DIRECT-MOUNTED PAD

Working Pressure : 2000psi / PN140 bar
Size Range : 1/2" ~ 4" (DN15 ~ DN100)
Temperature Range : -20 to 180° C (-4 to 356° F)



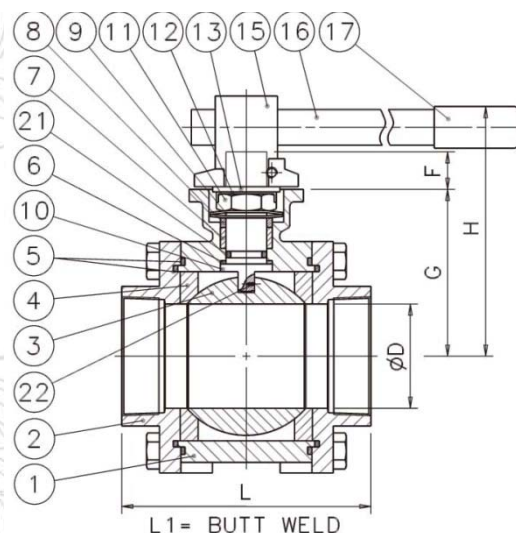
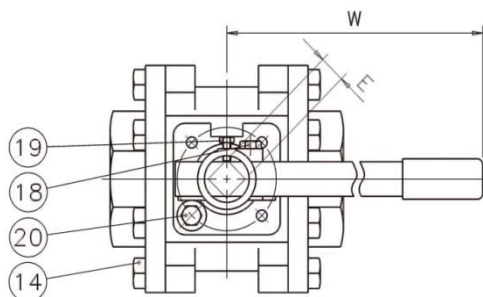
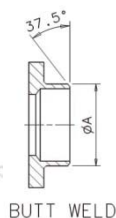
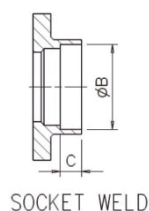
Application Standards:

Body Material	ASTM A216 WCB / ASTM A351 CF8 / ASTM A351 CF8M
Seat	RTFE
Pressure	2000psi
Connections	BS21(BSP), BSPT, ISO228-1, DIN2999, ISO7-1Rp, B1.20.1 NPT, B16.11 Socket Weld, B16.25 Butt Weld
Specifications	Body wall thickness : ASME B16.34 Face to Face : Manufacturer's Standard
Valve Test	API 598

Features:

- 3-pc high performance design
- Blow-out-proof stem & Anti-static Device
- High Quality Investment Casting (Wax Injection Procedure)
- In-line Replacement to swing-out-the caps and replaced the internal parts without disturbing alignment of pipeline
- Industrial Service for severe conditions such as slurry, pulp, solid containing fluids, high temperature.
- ISO 5211 Direct-Mounted pad for actuation design
- API607 Fire Safe is optional

Size: 2 1/2"~4"



DIMENSIONS:

SIZE		ØD		L		E		F		G		H		W		ØA		ØB		C		ISO 5211
IN	DN	IN	MM	IN	MM	IN	MM	IN	MM	IN	MM	IN	MM	IN	MM	IN	MM	IN	MM	IN	MM	
2 1/2"	65	2.56	65.0	8.66	220	0.87	22	0.94	24	4.59	116.5	6.81	173	18.11	460	3.00	76.3	2.91	73.9	0.67	17	F07-F10
3"	80	3.15	80.0	9.84	250	0.87	22	0.94	24	5.00	127.0	7.24	184	18.11	460	3.51	89.1	3.54	89.8	0.67	17	F07-F10
4"	100	3.94	100.0	11.02	280	1.06	27	1.14	29	6.26	159.0	9.53	242	23.62	600	4.50	114.3	4.54	115.2	0.79	20	F10