

TWO-PIECE BALL VALVE DIN PN16 FLANGE END

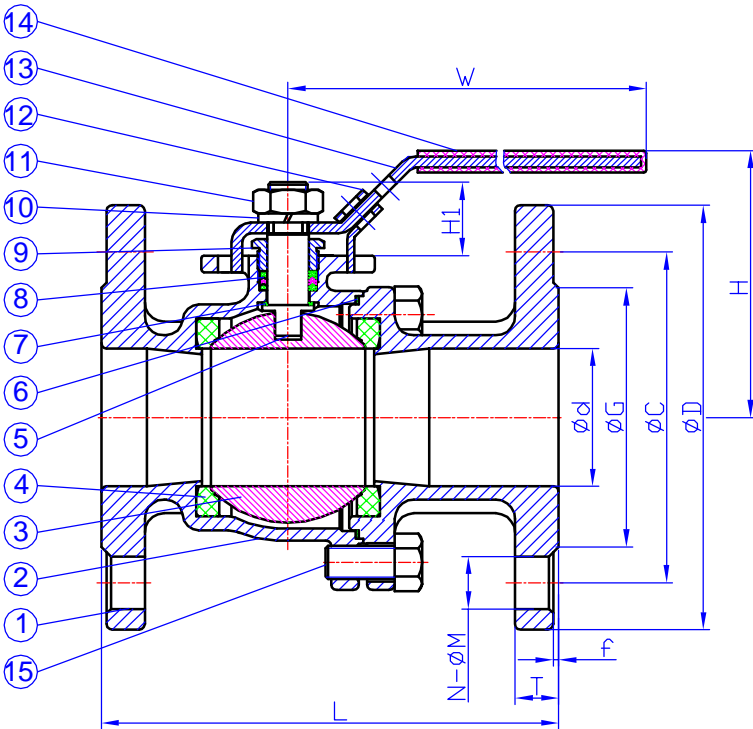
TC244A STAINLESS STEEL 316/1.4408

FEATURES:

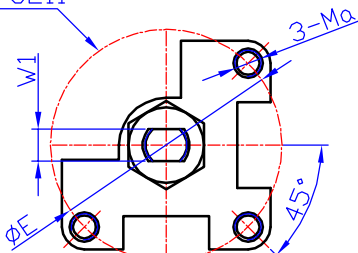
- FACE TO FACE DIMENSION: DIN 3202-F4
- END FLANGE DIMENSION: PN16 DIN 2633
- TEST: EN 12266-1
- WITH ISO 5211 MOUNTING PAD
- INVESTMENT CASTING BODY
- BLOW-OUT PROOF STEM / FULL PORT
- LEVER OPERATED
- MATERIAL: STAINLESS STEEL 316/1.4408

MATERIALS LIST:

NO.	PART NAME	MATERIAL
1	BODY	1.4408
2	CAP	1.4408
3	BALL	1.4408
4	SEAT	PTFE
5	STEM	SUS316
6	GASKET	PTFE
7	THRUST WASHER	PTFE
8	PACKING	PTFE
9	GLAND	SUS304
10	SPRING WASHER	SUS304
11	STEM NUT	SUS304
12	LOCKING DEVICE	SUS304
13	HANDLE	SUS304
14	PLASTIC COVER	PLASTIC
15	BOLT	SUS304

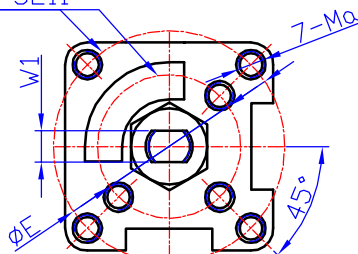


ISO 5211



TYPE 1 DN15-DN50

ISO 5211



TYPE 2 DN65-DN100

DIMENSIONS:

SIZE	d	D	C	G	f	T	N-ØM	L	H	H1	W	W1	ISO 5211	E	Ma
15	15	95	65	45	2	16	4-Ø14	115	72	16.5	123	6.5	F03	36	M5
20	20	105	75	58	2	18	4-Ø14	120	76	16.5	123	6.5	F03	36	M5
25	25	115	85	68	2	18	4-Ø14	125	92	23.5	183	9.5	F05	50	M6
32	32	140	100	78	2	18	4-Ø18	130	95	21.0	153	8.0	F04	42	M5
40	40	150	110	88	3	18	4-Ø18	140	125	37.5	246	12	F07	70	M8
50	50	165	125	102	3	20	4-Ø18	150	132	37.5	246	12	F07	70	M8
65	65	185	145	122	3	18	4-Ø18	170	166	47.0	285	16	F07-F10	70-102	M10
80	80	200	160	138	3	20	8-Ø18	180	176	47.0	285	16	F07-F10	70-102	M10
100	100	220	180	158	3	20	8-Ø18	190	189	47.0	385	16	F07-F10	70-102	M10