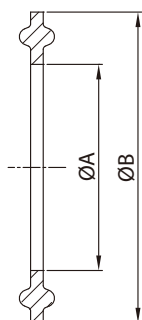
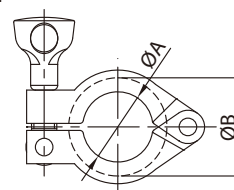


MÉRET	ØA	ØB
1/2"~3/4"	20	28.2
A37	27.8	37
1"~1.5"	44.4	53.6
2"	57.8	67
2.5"	71.4	80.6
3"	84	94
3.5"	99	109.2
4"	110	122
4.5"	123	133.2
6"	155.4	170.4
8"	205	220

1/2"~3/4"



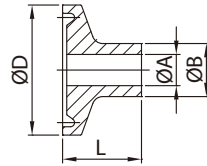
(PTFE)

MÉRET	ØA	ØB
DN8	11.1	33.2
DN12	14.8	33.2
DN15	18.9	33.2
DN20	24.5	49.7
DN25	31.3	49.7
DN32	40	49.7
DN40	45.9	63.2
DN50	57.1	76.7
DN65	72.9	90.2
DN80	85.7	105.2
DN100	109.9	129.2
DN125	134.5	154.2
DN150	163.1	182.2
DN200	211.9	232.7

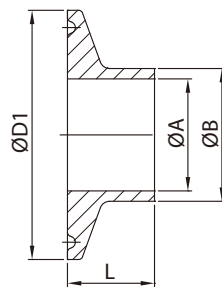
(EPDM)

MÉRET	ØA	ØB
DN10	9.8	33.2
DN15	15.8	33.2
DN20	19.8	33.2
DN28	25.8	49.7
DN34	31.8	49.7
DN40	37.8	49.7
DN52	49.8	63.2
DN70	66.8	90.2
DN85	81.8	105.2
DN101.6	98.4	118.2
DN104	100.8	118.2
DN125	125.8	154.2
DN150	150.8	182.2
DN200	200.8	232.7

DN6~DN10

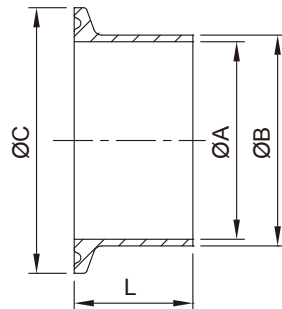


**DN15~DN200
DN8~DN200**



ISO

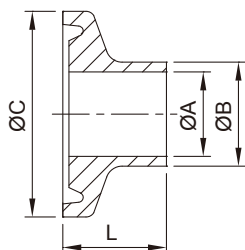
MÉRET	ØA	ØB	ØD	ØD1	L
DN6	7	10.2	25	—	12.7
DN8	10.3	13.5	25	34	12.7
DN10	14	17.2	25	34	12.7
DN15	18.1	21.3	50.5	34	21.5
DN20	23.7	26.9	50.5	50.5	21.5
DN25	30.5	33.7	50.5	50.5	21.5
DN32	39.2	42.4	50.5	50.5	21.5
DN40	45.1	48.3	64	64	21.5
DN50	56.3	60.3	77.5	77.5	28
DN65	72.1	76.1	91	91	28
DN80	84.9	88.9	106	106	28
DN100	109.1	114.3	130	130	28
DN125	133.7	139.7	155	155	28
DN150	162.3	168.3	183	183	28
DN200	211.1	219.1	233.5	233.5	28



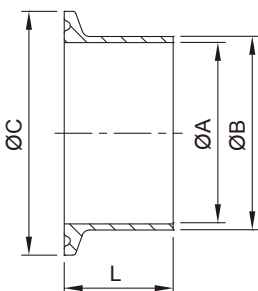
DIN

MÉRET	DA		DB		ØC	L
	ØA	ØB	ØA	ØB		
DN6	6	8	—	—	34	12.7
DN8	8	10	—	—	34	12.7
DN10	10	13	9	12	34	18
DN15	16	19	15	18	34	18
DN20	20	23	19	22	34	18
DN25	26	29	25	28	50.5	21.5
DN32	32	35	31	34	50.5	21.5
DN40	38	41	37	40	50.5	21.5
DN50	50	53	49	52	64	21.5
DN65	66	70	66	70	91	28
DN80	81	85	81	85	106	28
DN101.6	—	—	97.6	101.6	119	28
DN100	100	104	100	104	119	28
DN125	125	129	125	129	155	28
DN150	150	154	150	154	183	28
DN200	200	204	200	204	233.5	28

1/2"~3/4"



1.0"~12"



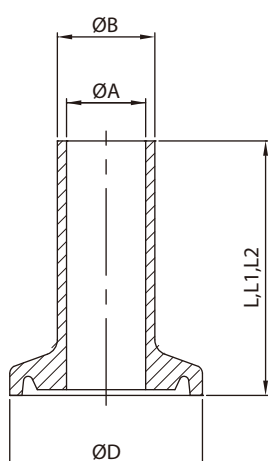
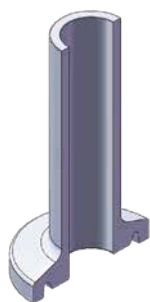
3A/SMS

14WMP 14MMP 14AMP

MÉRET	ØA	ØB	ØC	L	L	L
1/4"	3.9	6.35	25	12.7	21.5	28.6
1/2"	9.4	12.7	25	12.7	21.5	28.6
DN15	9.7	12.7	25.4	12.7	21.5	28.6
3/4"	15.75	19.05	25	12.7	21.5	28.6
DN20	15.95	19.05	25.4	12.7	21.5	28.6
1"	22.1	25.4	50.5	12.7	21.5	28.6
DN25	22.5	25	50.5	—	21.5	28.6
1.25"	28.45	31.75	50.5	12.7	21.5	28.6
1.5"	34.8	38.1	50.5	12.7	21.5	28.6
DN38	35.5	38.1	50.5	—	21.5	28.6
2.0"	47.5	50.8	64	12.7	21.5	28.6
DN51	48.5	51	64	—	21.5	28.6
2.5"	60.2	63.5	77.5	12.7	21.5	28.6
DN63.5	60.5	63.5	77.5	—	21.5	28.6
DN76	72.9	76.1	91	—	21.5	28.6
3.0"	72.9	76.2	91	12.7	21.5	28.6
DN104	100	104	119	—	21.5	28.6
4.0"	97.4	101.6	119	15.8	21.5	28.6
6.0"	146.86	152.5	166.87	—	21.5	28.6 or 38.1
8.0"	197.66	203.3	217.67	—	21.5	28.6 or 38.1
10"	247.2	254	268.47	—	21.5	28.6 or 38.1
12"	298	304.8	319.27	—	21.5	28.6 or 38.1

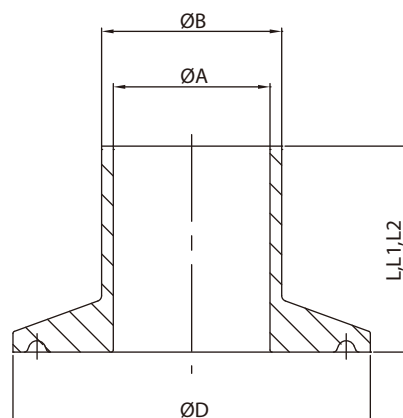
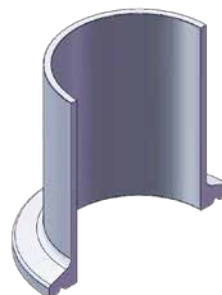
(Type A)

1/2"~1"



(Type B)

1"~6"



TYPE	MÉRET	ØA	ØB	ØD	L	L1	L2
A	1/4"	4.6	6.35	25	12.7	28.7	44.5
	3/8"	7.75	9.53	25	12.7	28.7	44.5
	1/2"	9.4	12.7	25	12.7	28.7	44.5
	3/4"	15.75	19.05	25	12.7	28.7	44.5
	1.0"	22.1	25.4	34	12.7	28.7	44.5
B	1.0"	22.1	25.4	50.4	12.7	28.7	44.5
	1.5"	34.8	38.1	50.4	12.7	28.7	44.5
	2.0"	47.5	50.8	63.9	12.7	28.7	57.2
	2.5"	60.2	63.5	77.4	12.7	28.7	57.2
	3.0"	72.9	76.2	90.9	12.7	28.7	57.2
	4.0"	97.4	101.6	118.9	15.9	28.7	57.2
6.0"	146.9	152.4	166.9	19.1	38.1	76.2	