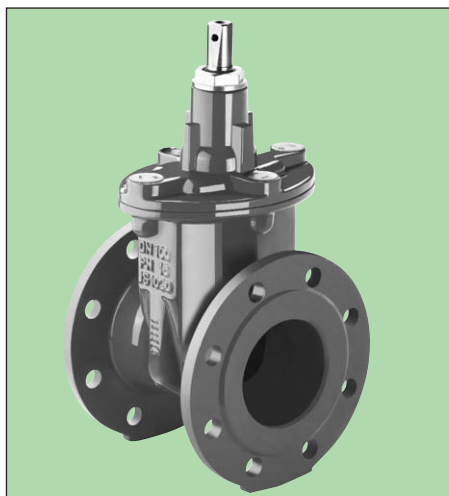




PN 10/16/25
DN 40...500



Product Features

- Resilient seated to EN 1171 (DIN 3352 - 4A and 4B)
- Face-to-face to EN 558-1, basic series 14 (PN 10, 16) and 15 (PN 10, 16, 25) (DIN 3202, F4 and F5) and BS 5163
- Fully guided wedge
- DVGW and WRAS approved components
- Final Inspection Test to EN 12266 (DIN 3230 part 4)

Material

- Body, wedge and bonnet of ductile cast iron EN - JS 1030 (GGG-40)
- Wedge fully rubber lined with EPDM
- Stem of 316L (1.4404)
- Stem nut of dezincification resistant brass

Corrosion Protection

- Inside and outside epoxy coating minimum 300 microns



Field of Application

- Max. operating temperature: 70°C

Accessories

- T-key
- Spindle extensions
- Surface box, plastic
- Surface box, plastic, adjustable.
- Supporting plate, plastic
- Surface box, cast iron
- SERIO[®]plus position indicator

For information about installation, commissioning, operating and maintenance we kindly refer to our **“Installation and Operating Instructions - Valves”**.

Field of use

Final Inspection Tests in acc. with EN 12266

DN	PN	Max.operating pressure	Max.operating temperature for neutral liquids	Test pressure with water	
				in body	in seat
mm	bar	bar	°C		
40...500	25	25	70	37.5	27.5
40...500	16	16	70	24	17.6
200...500	10	10	70	15	11

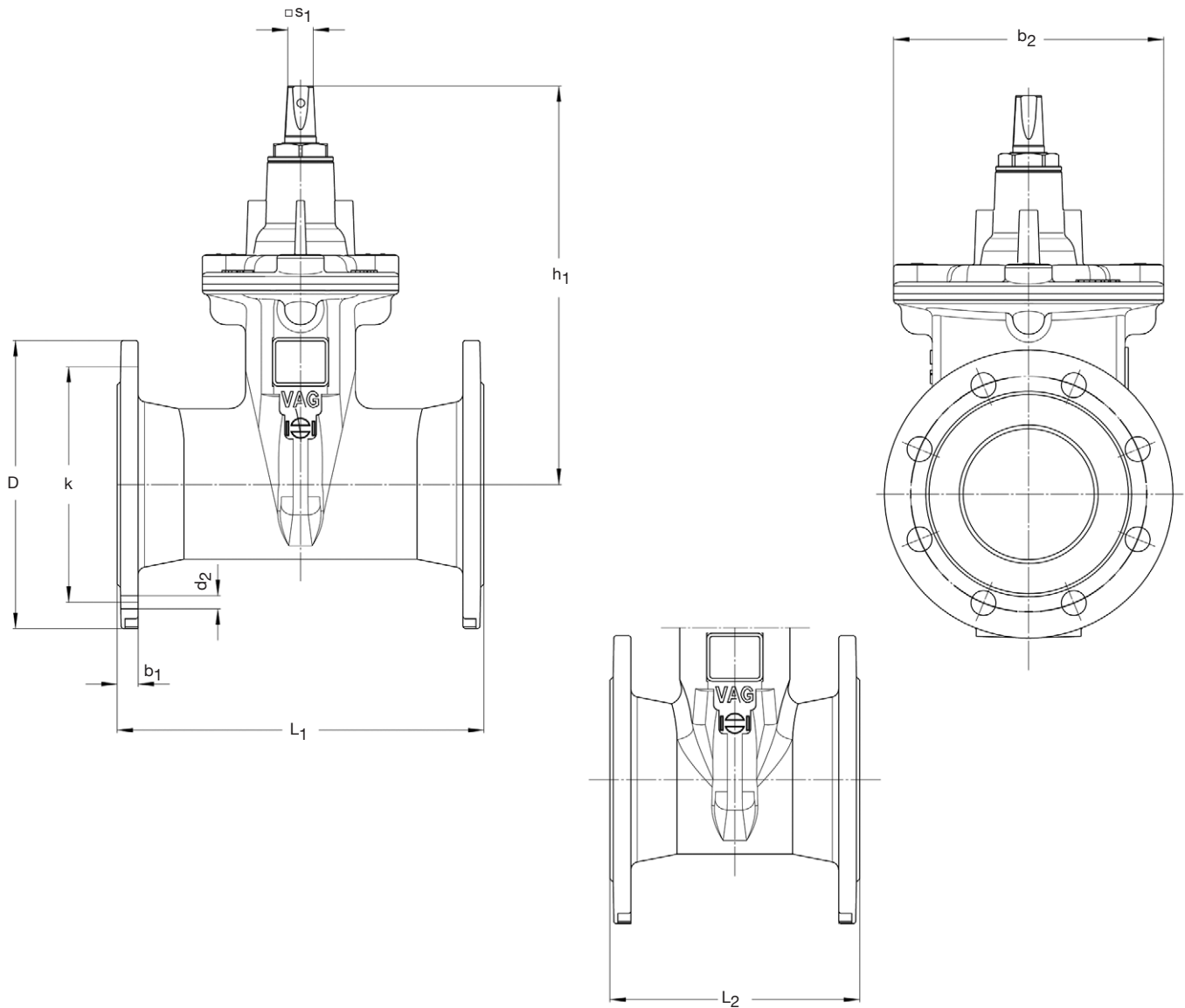
We reserve the right to make technical changes and use similar or higher-quality materials. Drawings are non-binding

Water
Sewage
Gas
Sea Water



VAG EKO[®]plus Gate Valve
resilient seated

Dimensions / weight



Dimensions in mm		40	50	65	80	100	125	150	200	250	300	350	400	500	600 ¹⁾	
Dimensions	h ₁ approx.	226	233	273	278	310	347	386	493	606	670	852	936	1096	1096	
	b ₂	121	121	206	206	206	228	252	330	413	472	619	619	726	726	
	□S ₁	14	14	17	17	19	19	19	24	27	27	27	32	32	36	
Face-to-Face length* to EN 558-1	Basic series15 L ₁	240	250	270	280	300	325	350	400	450	500	550	600	700	800	
	Basic series14 L ₂	140	150	170	180	190	200	210	230	250	270	290	310	350	-	
PN 16 Flange dimensions* to EN 1092-2	D	150	165	185	200	220	250	285	340	405	460	520	580	715	780	
	k	110	125	145	160	180	210	240	295	355	410	470	525	650	-	
	No. of holes	4	4	4	8	8	8	8	12	12	12	16	16	20	-	
	d ₂	19	19	19	19	19	19	19	23	23	28	28	28	31	34	
	b ₁	19	19	19	19	19	19	19	20	22	24.5	26.5	28.5	31.5	-	
PN 10 Flange dimensions* to EN 1092-2	k	PN 10 and PN 16 are identical							295	350	400	460	515	620	725	
	No. of holes	PN 10 and PN 16 are identical							8	12	12	16	16	20	20	
	d ₂	PN 10 and PN 16 are identical							23	23	23	23	28	28	31	
Turns/stroke		10	12	16	20	20	25	30	34	43	51	59	50	64	64	
Net weight Volume req	Face-to-Face length L ₁	kg approx.	8.7	9.7	14.5	16.9	22.5	27.8	34.7	56.9	110.5	131.8	276	348	538	660
		m ³ approx.	0.011	0.013	0.018	0.020	0.028	0.038	0.053	0.090	0.147	0.207	0.318	0.426	0.727	0.927
Net weight Volume req	Face-to-Face length L ₂	kg approx.	8.2	9.2	13.5	15.5	17.9	25.7	32.4	52.0	96.9	114.1	247	310	530	-
		m ³ approx.	0.006	0.008	0.013	0.014	0.018	0.024	0.032	0.052	0.084	0.115	0.199	0.235	0.370	-

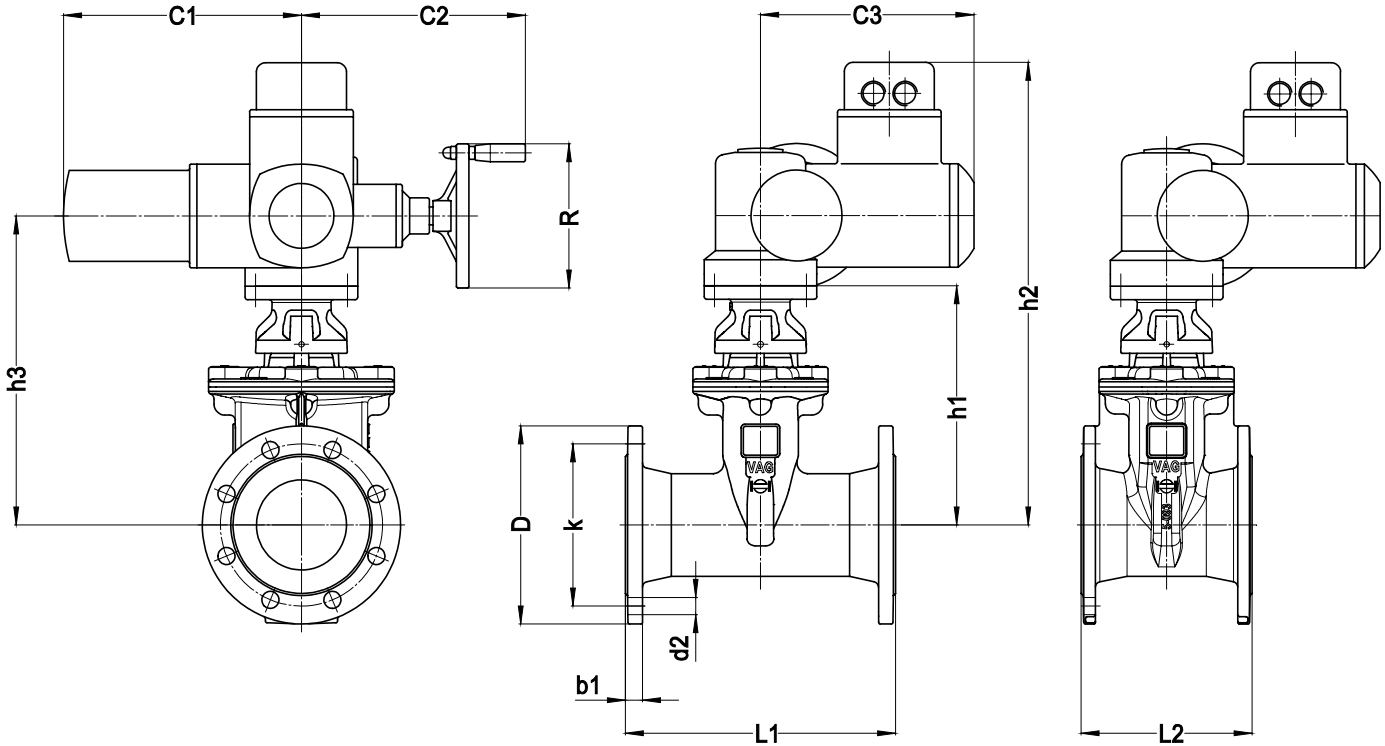
* Face-to-Face length and flange dimension acc. to BS 5163 please see data sheet:

KAT 1030-BS EKOplus Gate Valve type A in acc. BS 5163

¹⁾bore equal to DN 500



Dimensions / weight



Dimensions in mm		40	50	65	80	100	125	150	200	250	300	
Dimensions	h1	192	197	231	236	265	303	342	498	563	627	
	h2	440	446	480	485	514	551	591	747	891	955	
	h3	270	276	310	315	344	381	421	577	696	760	
	h3	270	276	310	315	344	381	421	577	696	760	
Face-to-Face length*	L1	240	250	270	280	300	325	350	400	450	500	
Face-to-Face length	L2	140	150	170	180	190	200	210	230	250	270	
PN 16 Flange dimensions* in acc. EN 1092-2	D	150	165	185	200	220	250	285	340	405	460	
	b1	19	19	19	19	19	19	19	20	22	24,5	
	d2	19	19	19	19	19	19	23	23	28	28	
	k	110	125	145	160	180	210	240	295	355	410	
PN 10 Flange dimensions* in acc. EN 1092-2	No. of holes	4	4	4	8	8	8	8	12	12	12	
	d2	PN 10 and PN 16 are identical						19	23	23	23	23
	k	PN 10 and PN 16 are identical						210	240	295	350	400
	No. of holes	PN 10 and PN 16 are identical						8	8	8	12	12
	c1	265	265	265	265	265	282 ¹⁾	282 ¹⁾	282	384	384	
	c2	249	249	249	249	249	254 ²⁾	254 ²⁾	254	329	329	
	c3	237	237	237	237	237	247 ³⁾	247 ³⁾	247	285	285	
	R	160	160	160	160	160	200 ⁴⁾	200 ⁴⁾	200	315	315	
Net-weight ⁵⁾ (kg) ~	Basic series 14	36	37	42	44	46	59	65	92	170	186	
	Basic series 15	37	38	43	45	51	61	68	97	183	203	

¹⁾ Face-to-Face length and flange dimension acc. to BS 5163 please see data sheet:

KAT 1030-BS EKO[®]plus Gate Valve in acc. BS 5163 Type A

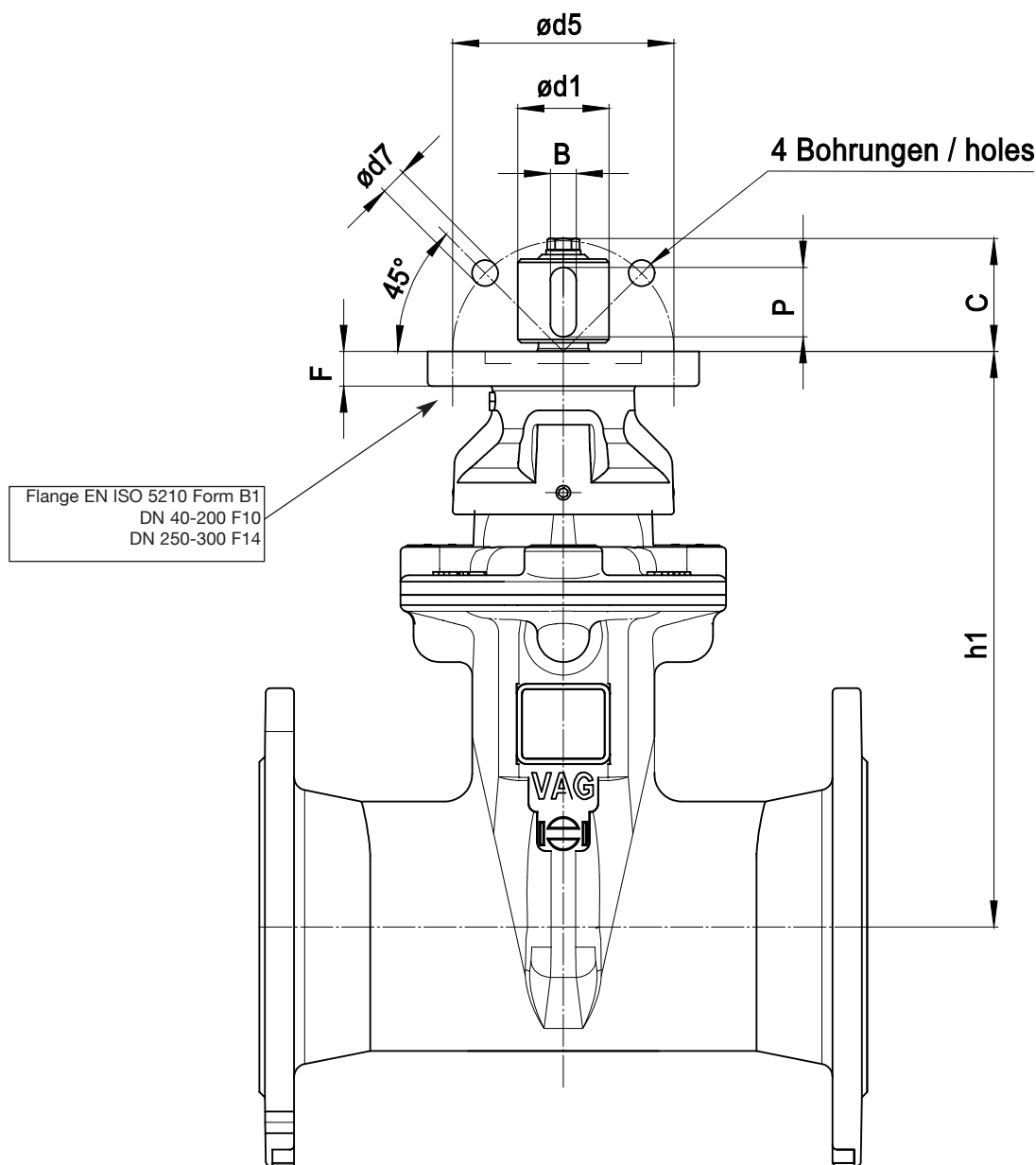
¹⁾ PN 10: c1 = 265 mm, ²⁾ PN 10: c2 = 249 mm, ³⁾ PN 10: c3 = 237 mm, ⁴⁾ PN 10: R = 160 mm

⁵⁾ approx. weight in standard version with accordingly proposed rpm. Standard types of the different DN see next page. when using other types of actuators, the total weight has to be evaluated manually.

We reserve the right to make technical changes and use similar or higher-quality materials. Drawings are non-binding



Dimensions / weight



Dimensions in mm											
DN		40	50	65	80	100	125	150	200	250	300
Dimensions	h1	192	197	231	236	265	303	342	498	563	627
	F	15	15	15	15	15	15	15	16	16	16
	P	32	32	32	32	32	32	32	32	56	56
	B	12	12	12	12	12	12	12	12	18	18
	C	47	47	47	47	52	52	52	44	68	68
	Ød1	42	42	42	42	42	42	42	42	60	60
	Ød5	102	102	102	102	102	102	102	102	140	140
	Ød7	12	12	12	12	12	12	12	12	19	19
	Type	SA07.5	SA07.5	SA07.5	SA07.5	SA07.5	SA10.1*	SA10.1*	SA10.1	SA14.1	SA14.1
	Flange	F10	F10	F10	F10	F10	F10	F10	F10	F14	F14
Net-weight (kg)	Basic series14	10.8	11.8	16.1	18.1	20.5	28.3	35.0	61.3	104	120
	Basic series15	11.3	12.3	17.1	19.5	25.1	30.4	37.3	66.1	117	137

* at max. operating pressure 10bar: SA07.5

We reserve the right to make technical changes and use similar or higher-quality materials. Drawings are non-binding