



Szalai és Társa Kft.
1992

VDM1-16FW-316



BALL VALVE



APPLICATION :

Chemical and pharmaceutical industries, petrochemical industries, hydraulic installation, compressed air.

GENERAL CHARACTERISTICS :

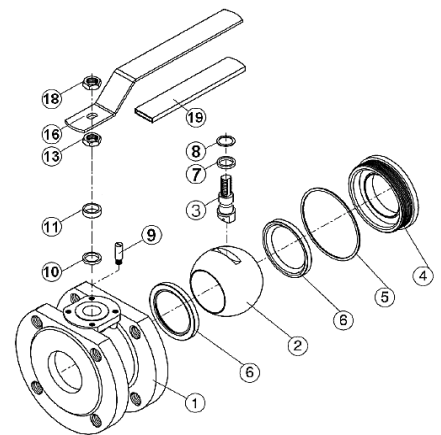
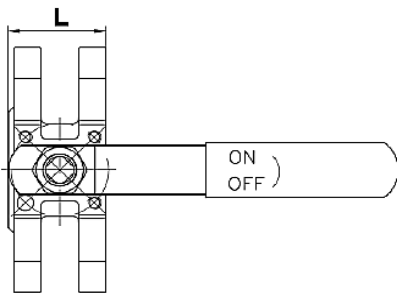
Range: DN- 15 - DN-150
Full Bore.
Anti blow-out stem
PTFE filled with glass fiber.
Locking device DN-15 a DN-100
Mounting Pad ISO 5211
Threaded holes flanges
Hollow body

STANDARDS :

Manufacture according to ISO 9001 : 2008
Directive 2014/68/EU
construction according to EN 12516
designing according to ASME B16.34
Pressure Tests according to EN12266-1, rate A
NP-16 R.F flanges according to EN 1092-1 PN-16
Length according to EN 558 series 100 up to DN-100

WORKING CONDITIONS :

Maximum Working Pressure : 16 bar.
Maximum Working Temperature : - 20 °C / + 180 °C.

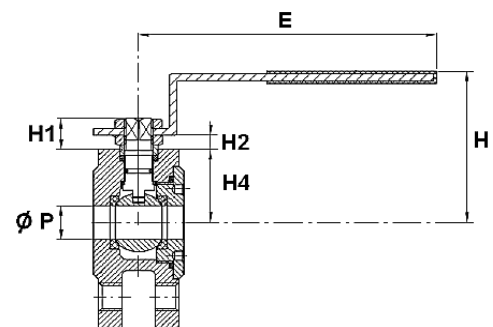


MATERIALS DN-15 / DN-20:

No.	Part	Material
1	Body	S Steel A351 CF8M
2	Ball	S Steel A351 CF8M
3	Stem	S Steel 304
4	Insert	S Steel A351 CF8M
5*	Body seal	PTFE
6*	Seat	PTFE + 3% Glass
7*	Thrust washer	PTFE
8*	O ring	FKM
9	Stop pin	S Steel 304
10*	Packing	PTFE
11	Gland	S Steel 304
13	Gland nut	S Steel 304
16	Handle	S Steel 304
18	Handle nut	S Steel 304
19	Handle cover	Plastic

DIMENSIONS DN-15 / DN-20:

DN	ØP	L	E	H	H1	H2	H4	Weight
15	15	35	125,2	75	13,5	6	32	1,1
20	20	39	125,2	80	13,5	6	35,5	1,41



fax: (1) 260 2607
tel: (1) 433 3914

warehouse: 2360 Gyál, Bánki Donát utca 28.
office: 1108 Budapest, Venyige utca 3.

e-mail: szalaikft@szalaikft.hu
web: www.szalaikft.hu

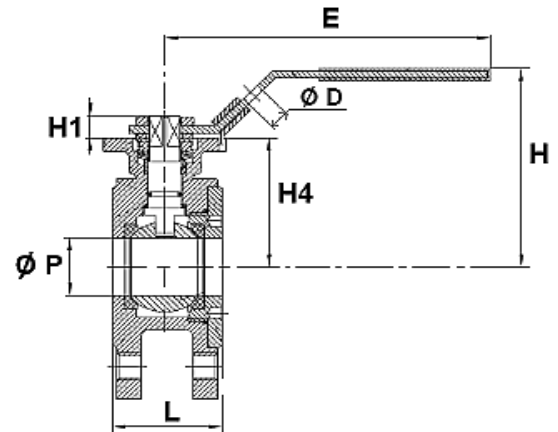
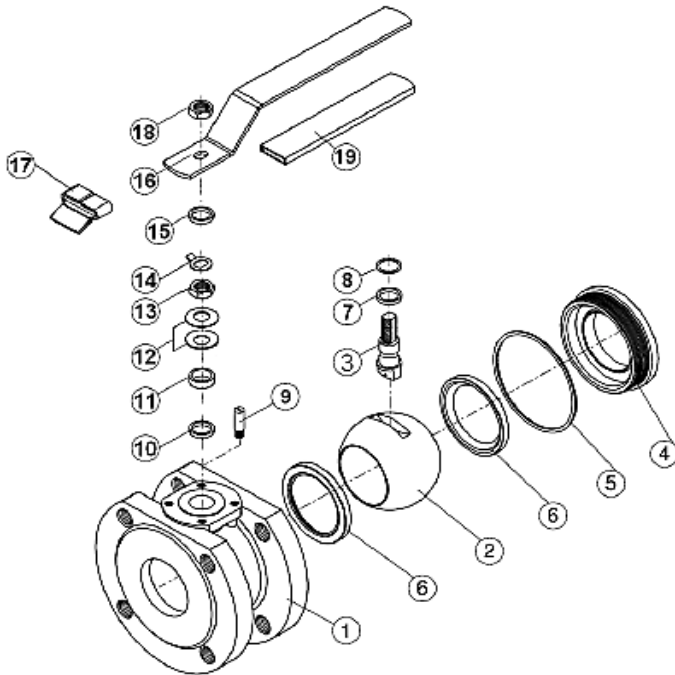


Szalai és Társa Kft.
1992

VDM1-16FW-316

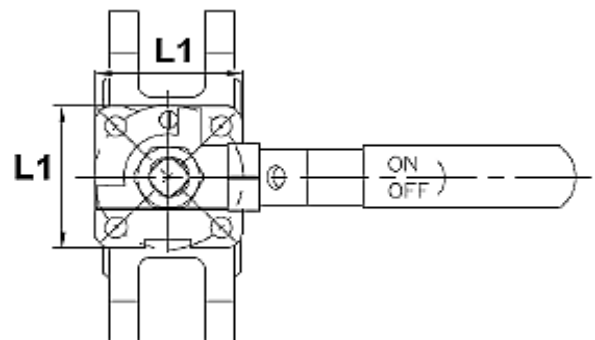


BALL VALVE



MATERIALS DN-25 / DN-50:

No.	Part	Material
1	Body	S Steel A351 CF8M
2	Ball	S Steel A351 CF8M
3	Stem	S Steel 304
4	Insert	S Steel A351 CF8M
5*	Body seal	PTFE
6*	Seat	PTFE + 3% Glass
7*	Thrust washer	PTFE
8*	O ring	FKM
9	Stop pin	S Steel 304
10*	Packing	PTFE
11	Gland	S Steel 304
12	Elastic ring	S Steel 301
13	Gland nut	S Steel 304
14	Tab washer	S Steel 304
15	Washer	S Steel 304
16	Handle	S Steel 304
17	Locking device	S Steel 304
18	Handle nut	S Steel 304
19	Handle cover	Plastic



DIMENSIONS DN-25 / DN-50:

DN	ØP	L	L1	E	H	H1	H4	ØD	Weight
25	25	44	49	136,2	95	12	65	8	1,82
32	32	52	49	136,2	101,5	10	71,5	8	3
40	38	64	65	204,5	122,5	13,5	85	8	4,3
50	50	83	65	204,5	121,5	14	83,5	8	5,9

fax: (1) 260 2607
tel: (1) 433 3914

warehouse: 2360 Gyál, Bánki Donát utca 28.
office: 1108 Budapest, Venyige utca 3.

e-mail: szalaikft@szalaikft.hu
web: www.szalaikft.hu

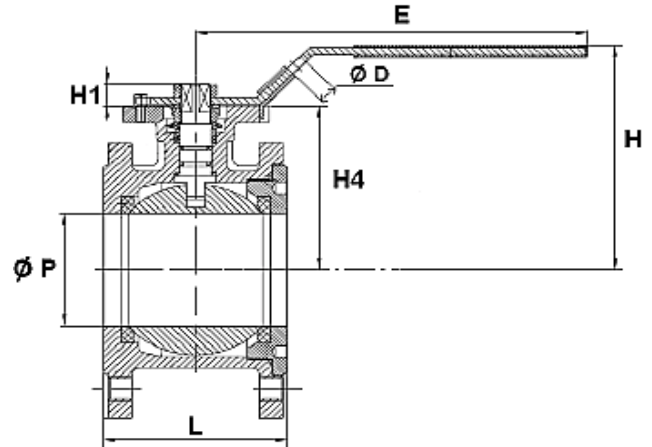
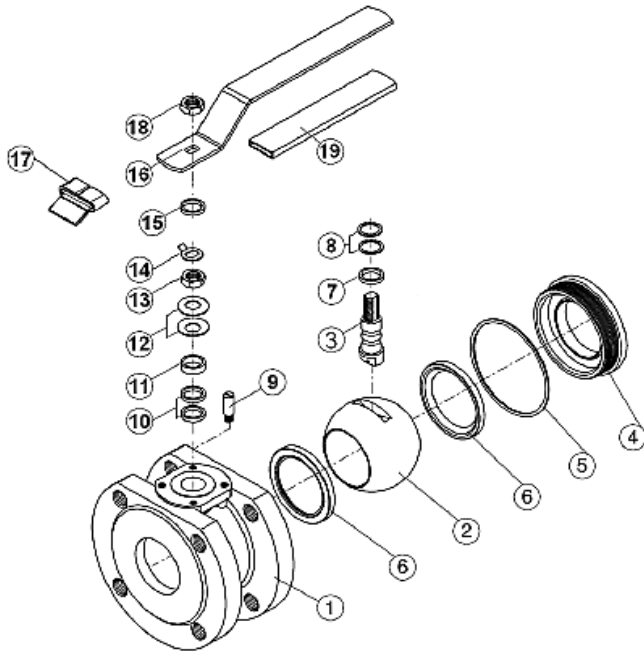


Szalai és Társa Kft.
1992

VDM1-16FW-316

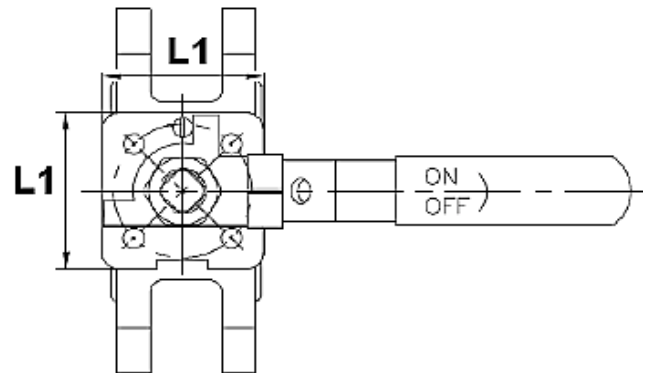


BALL VALVE



MATERIALS DN-65 / DN-100:

No.	Part	Material
1	Body	S Steel A351 CF8M
2	Ball	S Steel A351 CF8M
3	Stem	S Steel 304
4	Insert	S Steel A351 CF8M
5*	Body seal	PTFE
6*	Seat	PTFE + 3% Glass
7*	Thrust washer	PTFE
8*	O ring	FKM
9	Stop pin	S Steel 304
10*	Packing	PTFE
11	Gland	S Steel 304
12	Elastic ring	S Steel 301
13	Packing	S Steel 304
14	Tab washer	S Steel 304
15	Washer	S Steel 304
16	Handle	S Steel 304
17	Locking device	S Steel 304
18	Handle nut	S Steel 304
19	Handle cover	Plastic



DIMENSIONS DN-65 / DN-100:

DN	ØP	L	L1	E	H	H1	H4	ØD	Weight
65	65	100	94	250	142,2	18	101	10	9
80	76	121	94	250	161	18	120	10	12,5
100	94	152	94	250	174	20,5	130	10	19,4

fax: (1) 260 2607
tel: (1) 433 3914

warehouse: 2360 Gyál, Bánki Donát utca 28.
office: 1108 Budapest, Venyige utca 3.

e-mail: szalaikft@szalaikft.hu
web: www.szalaikft.hu

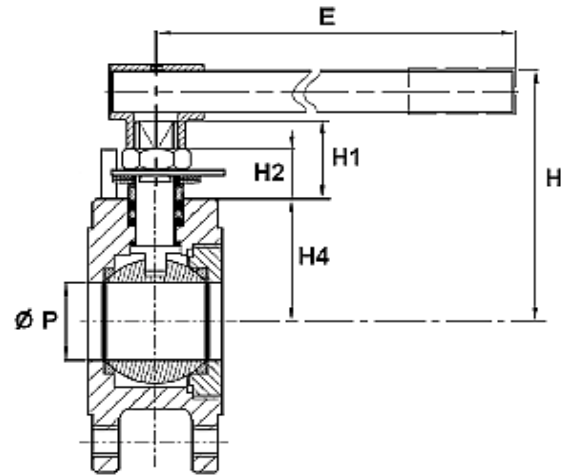
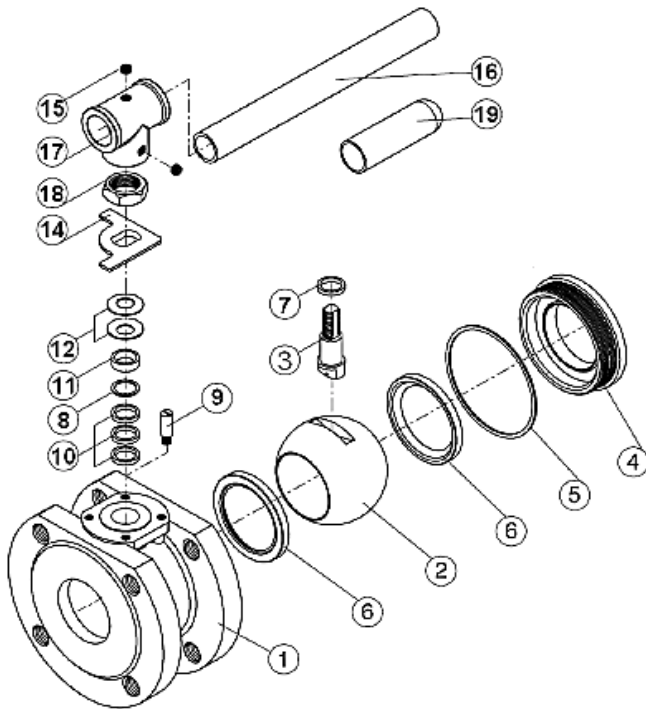


Szalai és Társa Kft.
1992

VDM1-16FW-316

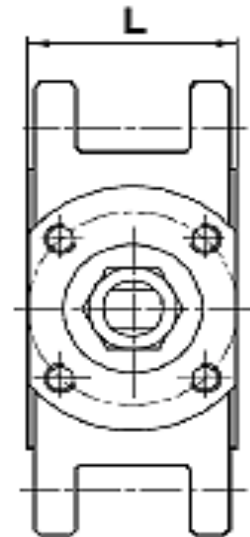


BALL VALVE



MATERIALS DN-125 / DN-150:

No.	Part	Material
1	Body	S Steel A351 CF8M
2	Ball	S Steel A351 CF8M
3	Stem	S Steel 316
4	Insert	S Steel A351 CF8M
5*	Body seal	PTFE
6*	Seat	PTFE + 15% Glass
7*	Thrust washer	PTFE
8*	Packing	PTFE
9	Stop pin	S Steel 304
10*	Stem packing	PTFE
11	Gland	S Steel 304
12	Elastic ring	S Steel 301
14	Stop plate	S Steel 304
15	Handle srew	S Steel 304
16	Handle	Steel
17	Handle adapter	S Steel A351 CF8
18	Packing nut	S Steel 304
19	Handle cover	Plastic



DIMENSIONS DN-125 / DN150:

DN	ØP	L	E	H	H1	H2	H4	Weight
125	118	179	400	205	50	31	117	30
150	135	202	600	220	50	31	130	41

fax: (1) 260 2607
tel: (1) 433 3914

warehouse: 2360 Gyál, Bánki Donát utca 28.
office: 1108 Budapest, Venyige utca 3.

e-mail: szalaikft@szalaikft.hu
web: www.szalaikft.hu



Szalai és Társa Kft.
1992

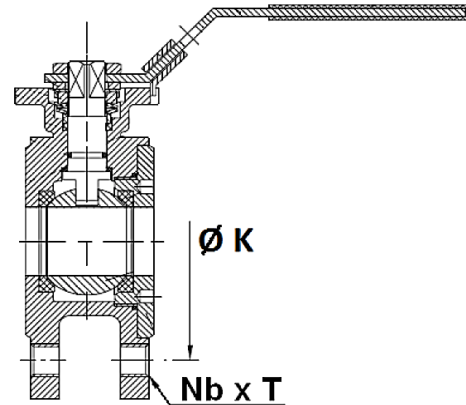
VDM1-16FW-316



BALL VALVE

SIZE THREADED FLANGES HOLES (mm):

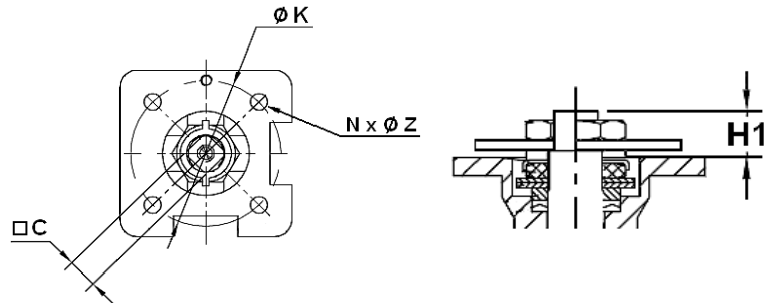
DN	ØK	Nb x ØL
15	65	4xM12
20	75	4xM12
25	85	4xM12
32	100	4xM16
40	110	4xM16
50	125	4xM16
65	145	4xM16
80	160	8xM16
100	180	8xM16
125	210	8xM16
150	240	8xM20



ISO MOUNTING PAD AND STEM SIZE (mm):

DN	C	H1	ØK	ISO	NxØZ
15	9	13,5	36	F03	4x5
20	9	13,5	36	F03	4x5
25	11	12	42	F04	4x6,4
32	11	10	42	F04	4x6,4
40	14	13,5	50	F05	4x7
50	14	14	50	F05	4x7
65	17	18	70	F07	4x9
80	17	18	70	F07	4x9
100	17	20,5	102	F10	4x11

DN-15 / DN-100



DN-125 / DN-150

DN	C	ØY	H1	ØK	ISO	NxØZ
125	17	28	50	102	F10	4xM10
150	17	28	50	125	F12	4xM12

