



Szalai és Társa Kft.
1992

R2-64-BSP-316



CHECK VALVES



APPLICATION :

Chemical and pharmaceutical, petrochemical industries, industry, etc.

GENERAL CHARACTERISTICS :

Range: DN-1/4" - DN-2"
Stainless steel 1.4408 (AISI-316)
Gasket PTFE filled with 15% glass fiber .
Spring SS 316 .
BSP Thread .
All positions (respect the flow direction indicated by the arrow).

STANDARDS :

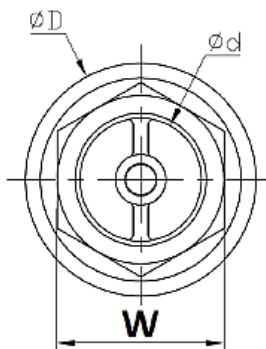
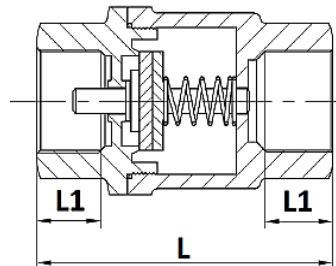
Manufacture according to ISO 9001 : 2015.
Directive 2014/68/EU
BSP Thread: ISO 228-1
Pressure tests according to API 598, table 6.

WORKING CONDITIONS :

Maximum Working Pressure : 63 bar.
Maximum allowed fluid Temperature : -20 °C / +180 °C.
Used saturated steam: 14 Bar max.

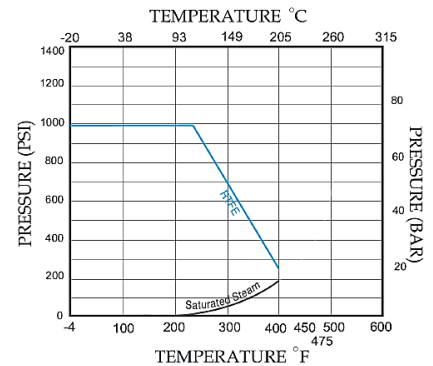
MATERIALS:

| No. | Part | Material |
|-----|-------------|------------------------|
| 1 | Body | Stainless Steel 1.4408 |
| 2 | Cover | Stainless Steel 1.4408 |
| 3 | Disc | Stainless Steel 1.4408 |
| 4 | Gasket | PTFE + 15% glass fiber |
| 5 | Spring | Stainless Steel 316 |
| 6 | Body Gasket | PTFE + 15% glass fiber |



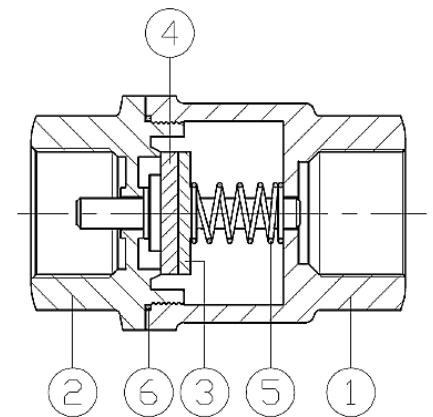
DIMENSIONS OPENING PRESSURE (mBar):

| DN | ↑ | ↓ | → |
|----|----|----|----|
| 8 | 20 | 19 | 20 |
| 10 | 20 | 19 | 20 |
| 15 | 21 | 20 | 21 |
| 20 | 21 | 20 | 21 |
| 25 | 22 | 21 | 22 |
| 32 | 23 | 22 | 24 |
| 40 | 24 | 22 | 24 |
| 50 | 25 | 23 | 25 |



DIMENSIONS :

| DN | Ød | ØD | L | L1 | W | Kvs (m ³ /h) | Weight |
|--------|----|------|-------|------|----|-------------------------|--------|
| 1/4" | 10 | 34,3 | 58,7 | 12,5 | 22 | 2,6 | 0,18 |
| 3/8" | 10 | 34,3 | 58,7 | 12,5 | 22 | 2,6 | 0,17 |
| 1/2" | 15 | 34,3 | 58,7 | 12,5 | 26 | 3,8 | 0,19 |
| 3/4" | 20 | 46 | 72,9 | 16 | 33 | 5,1 | 0,4 |
| 1" | 25 | 54 | 88,9 | 20 | 39 | 8 | 0,6 |
| 1 1/4" | 32 | 62,5 | 106,2 | 22 | 49 | 10,3 | 1 |
| 1 1/2" | 40 | 73,5 | 126,5 | 22 | 55 | 12,8 | 1,5 |
| 2" | 50 | 90,5 | 127 | 23 | 69 | 16 | 2,2 |



fax: (1) 260 2607
tel: (1) 433 3914

warehouse: 2360 Gyál, Bánki Donát utca 28.
office: 1108 Budapest, Venyige utca 3.

e-mail: szalaikft@szalaikft.hu
web: www.szalaikft.hu