



Szalai és Társa Kft.
1992

R3-64-BSP-BW-316



CHECK VALVES



APPLICATION :

Chemical and pharmaceutical, petrochemical industries, pressurized air, industry, etc.

GENERAL CHARACTERISTICS :

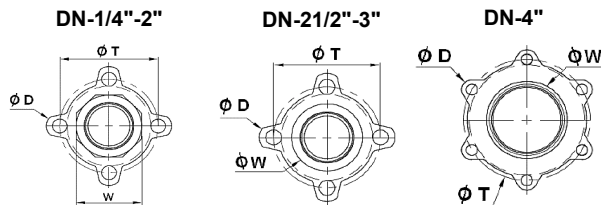
3 pieces spring type.
Connection: BSP - NPT- SW- BW
Horizontal or Vertical position
Position indicator arrow.
Metal-metal seat .
Accessories: Filter on request.

STANDARDS :

Manufacture according to ISO 9001 : 2015.
Directive 2014/68/EU
Construction according to EN 12516-1
Pressure Tests according to: API 598, table 6.
BSP threaded cylindrical according to ISO 228-1
NPT ends according to ANSI B1.20.1
BW ends according to DIN 3239

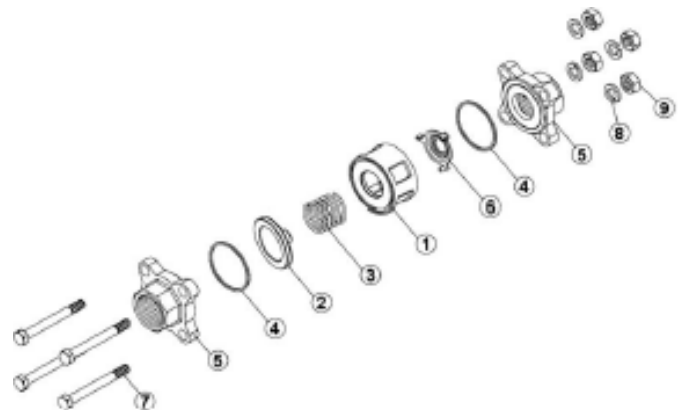
WORKING CONDITIONS :

Maximum Working Pressure : 63 bar.
Maximum Working Temperature : -20 °C / +180 °C.
Steam use: max. 11 bar.



MATERIALS:

No.	Part	Material
1	Body	S Steel CF8M
2	Disc	S Steel AISI-316
3	Spring	S Steel 316
4	Gasket	PTFE
5	Ends	S Steel CF8M
6	Spring holder	S Steel 316
7	Screw	S Steel 304
8	Washer	S Steel 304
9	Nut	S Steel 304

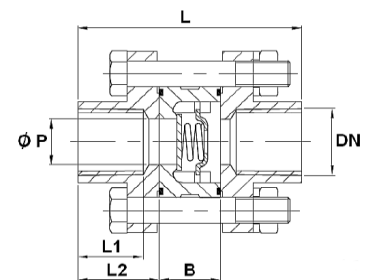


FLOW COEFFICIENT:

Size	1/4"	3/8"	1/2"	3/4"	1"	1 1/4"	1 1/2"	2"	2 1/2"	3"	4"
Kvs (m3/h)	1,23	1,23	2,24	6,5	9,61	15,89	22,49	25,12	57,8	64,93	91,6

DIMENSIONS :

DN	ϕP	L	L1	L2	B	ϕD	ϕT	W	Weight
1/4"	10	60	16	21	18	12	36,5	22	0,3
3/8"	10	60	16	21	18	12	36,5	22	0,2
1/2"	14	63	18	22	19	14	42,7	26	0,4
3/4"	19	71	20	23,5	24	16	51,7	32	0,5
1"	25	81,5	20	26	29,5	16	58,7	39	0,7
1 1/4"	31	91	23	29	33	18	72,7	49	1,3
1 1/2"	39	97,5	23	30	37,5	18	83,7	56	1,7
2"	49	117	27	35	47	18	98,7	69	2,5
2 1/2"	64	131,5	33	42	47,5	18	129	83	4,3
3"	78	143,5	35	44	55,5	18	153,5	100	6,2
4"	97	174,5	45	52	70,5	18	186,5	122,5	11



fax: (1) 260 2607
tel: (1) 433 3914

warehouse: 2360 Gyál, Bánki Donát utca 28.
office: 1108 Budapest, Venyige utca 3.

e-mail: szalaikft@szalaikft.hu
web: www.szalaikft.hu