



Szalai és Társa Kft.  
1992

# S14BSP-316



## GLOBE VALVE



### APPLICATION :

Chemical and pharmaceutical, industry, etc.

### GENERAL CHARACTERISTICS :

Reduced bore.

Rising rotating stem and handwheel

Screwd bonnet.

Metal-metal seat .

respect the flow direction (indicated by the arrow)

Do not use for steam.

### STANDARDS :

Manufacture according to ISO 9001 : 2015.

Directive 2014/68/EU

Pressure Tests according to EN 12266-1 rate A.

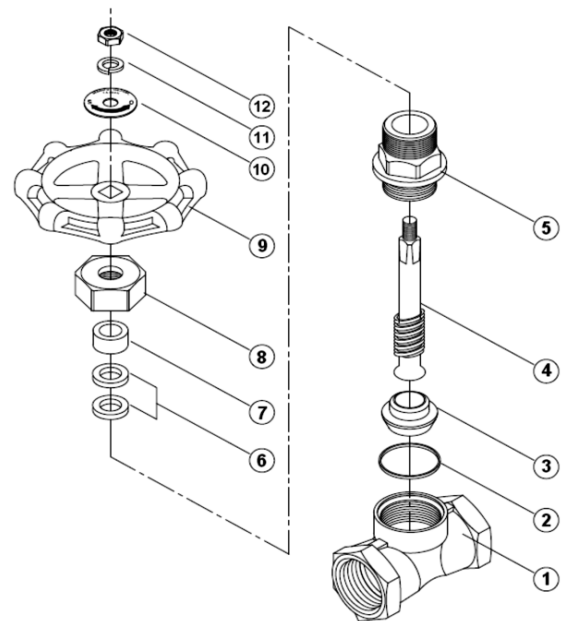
Pressure test according to DIN 3230

Female BSP cylindrical according to ISO 228/1

### WORKING CONDITIONS :

Maximum Working Pressure : 16 bar.

Maximum Working Temperature : -20 °C / +180 °C.



### MATERIALS:

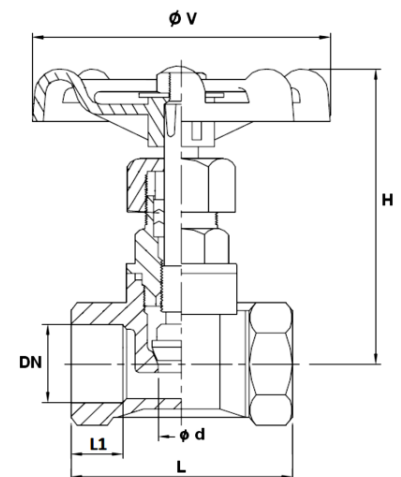
No.	Part	Material
1	Body	S Steel CF8-M
2	Body seal	PTFE
3	Disc	S Steel 316
4	Stem	S Steel 316
5	Bonnet	S Steel CF8-M
6	Packing	PTFE
7	Gland follower	S Steel 304
8	Packing nut	S Steel CF8-M
9	Handwheel	Steel
10	ID plate	S Steel 304
11	Washer	S Steel 316
12	Nut	S Steel 304

### FLOW COEFFICIENT:

Size	1/2"	3/4"	1"	1 1/4"	1 1/2"	2"
Kvs (m3/h)	1,88	3,06	5,67	9,05	15,18	24,94

### DIMENSIONS :

DN	Ød	L	L1	H (opened)	ØV	Weight
1/2"	12	52	12,5	79	70	0,26
3/4"	15	60	13	91	70	0,44
1"	20	72	17,5	105	80	0,6
1 1/4"	25	81	19	127	80	0,96
1 1/2"	32	90	20	142	90	1,22
2"	40	101	20	158	100	1,74



fax: (1) 260 2607  
tel: (1) 433 3914

warehouse: 2360 Gyál, Bánki Donát utca 28.  
office: 1108 Budapest, Venyige utca 3.

e-mail: [szalaikft@szalaikft.hu](mailto:szalaikft@szalaikft.hu)  
web: [www.szalaikft.hu](http://www.szalaikft.hu)