

83 SERIES

FULL BORE / REDUCED BORE

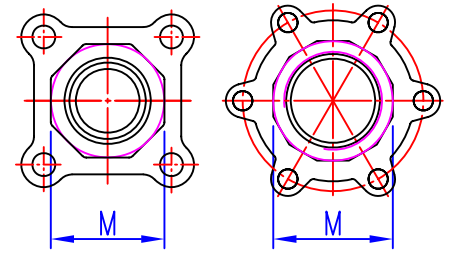
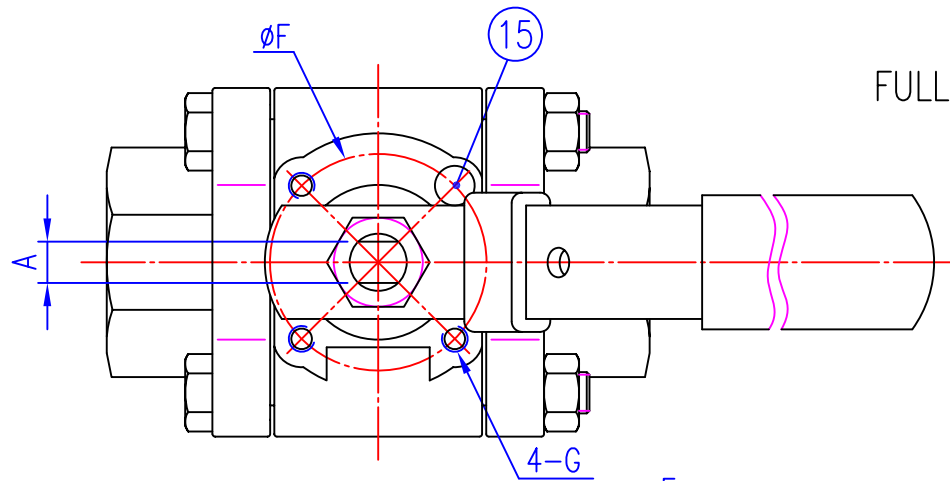
MATERIALS LIST

NO.	PART NAME	QTY	MATERIAL
1	Body	1	CF8M/WCB
2	End Cap	2	CF8M/WCB
3	Ball	1	SS316
4	Seat	2	RTFE
5	Joint Gasket	2	PTFE
6	Stem	1	SS316
7	Stem seal	1	RTFE
8	Stem Packing	1 Set.	MG1241
9	Gland	1	SS304
10	Belleville Washer	2	SS301
11	Lock Saddle	1	SS304
12	Stem Nut	2	SS304
13	Handle	1	SS304
14	Handle sleeve	1	VINYL
15	Stop Pin	1	SS304
16	Bolt	*	SS304
17	Bolt Nut	*	SS304
18	Locking Device	1	SS304
19	Anti-static Device	2	SS316

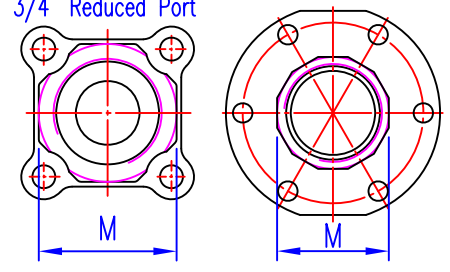
PS: * For FULL BORE 1/4" to 1-1/2"-4pcs

* For FULL BORE 2"-6pcs

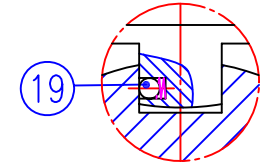
* Socket weld and butt weld uses CF3M material.



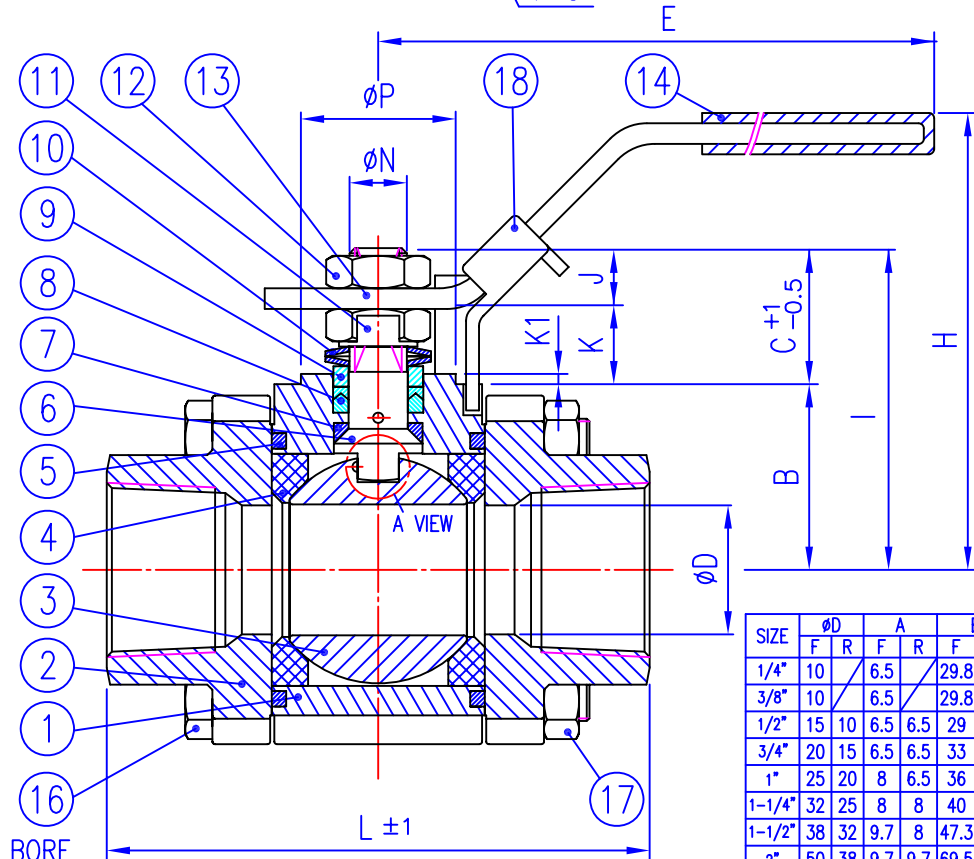
1/2"~1-1/2" Full Port
3/4" Reduced Port



1/4", 3/8" Full Port
1/2", 1"~2" Reduced Port



A VIEW



DIMENSIONS(mm)

SIZE	ØD		A		B		C		E		ØF		G		H		I		J		K		K1		L		M		ØP		ØN		ISO5211	
	F	R	F	R	F	R	F	R	F	R	F	R	F	R	F	R	F	R	F	R	F	R	F	R	F	R	F	R	F	R	F	R		
1/4"	10		6.5		29.8		7.4		134		36		M5		64.3		37.2		6.1		1.3		0.5		64.8		29.5		25		9.5		F03	
3/8"	10		6.5		29.8		7.4		134		36		M5		64.3		37.2		6.1		1.3		0.5		64.8		29.5		25		9.5		F03	
1/2"	15	10	6.5	6.5	29	29.8	16.1	7.4	134	134	36	36	M5	M5	71.5	64.3	45.1	37.2	7.3	6.1	8.8	1.3	2	0.5	72.5	64.8	30	29.5	25	25	9.5	9.5	F03 F03	
3/4"	20	15	6.5	6.5	33	29	18.1	16.1	134	134	36	36	M5	M5	76	71.5	51.1	45.1	8.8	7.3	9.3	8.8	2	2	85.4	72.5	36	36	25	25	9.5	9.5	F03 F03	
1"	25	20	8	6.5	36	33	24.6	18.1	170	134	42	36	M5	M5	82.3	76	60.6	51.1	11	8.8	13.6	9.3	2	2	105.3	85.4	44.5	44.5	30	25	11.1	9.5	F04 F03	
1-1/4"	32	25	8	8	40	36	24.3	24.6	170	170	42	42	M5	M5	87.3	82.3	64.3	60.6	9.7	11	14.6	13.6	2	2	111	105.3	54	54	30	30	11.1	11.1	F04 F04	
1-1/2"	38	32	9.7	8	47.3	40	30.2	24.3	207	170	50	42	M6	M5	103.6	87.3	77.5	64.3	12.2	9.7	18	14.6	2.2	2	127.3	111	60	60	35	30	14.3	11.1	F05 F04	
2"	50	38	9.7	9.7	69.5	47.3	26	30.2	207	207	50	50	M6	M6	121.6	103.6	95.5	77.5	12.6	12.2	13.4	18	1.5	2.2	142.3 (145 Round)	127.3	73.2	73.2	35	35	14.3	14.3	F05 F05	
2-1/2"		50		9.7		69.5		26		207		50		M6		121.6		95.5		12.6		13.4		1.5		145		86		35		14.3		F05

FULL BORE
PS: 1/4"~1" 2000 PSI /Class #800/PN125
1-1/4"~2" 1500 PSI /Class #600/PN100

REDUCED BORE
1/2"~1-1/4" 2000 PSI /Class #800/PN125
1-1/2"~2-1/2" 1500 PSI /Class #600/PN100

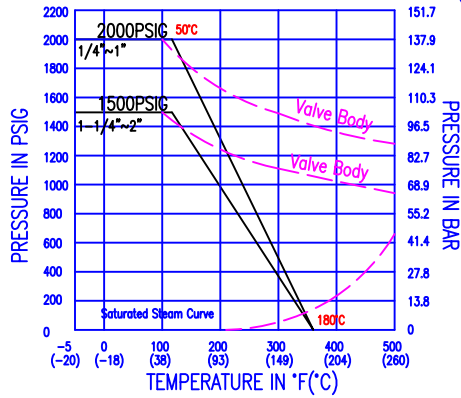
ORDER	DATE	REASON FOR CHANGE

MATERIAL	DATE	CHECKED BY	DRAW BY	
	2008'11,21		Flora L	
DRAWING	DRAWING NAME	83 SERIES (Z84T00A0)		
V83-1				
Legend	CHANGE BY	REMARK		

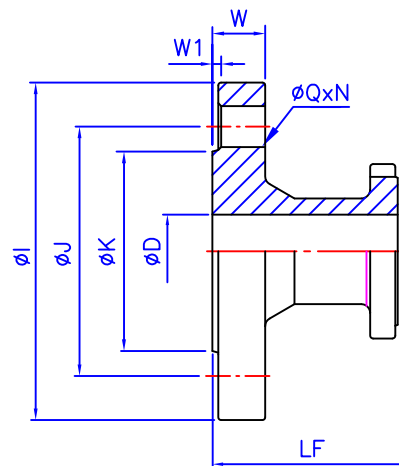
Series 83 1/4"~2" (Full Port)

SEAT: PTFE or RTFE

Pressure Vs. Temperature Chart



83 Standard/Fire Safe (Full Port/Reduced Port)



FLANGE END (PN10/16/25/40 F1)

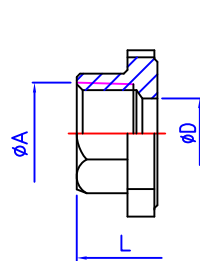
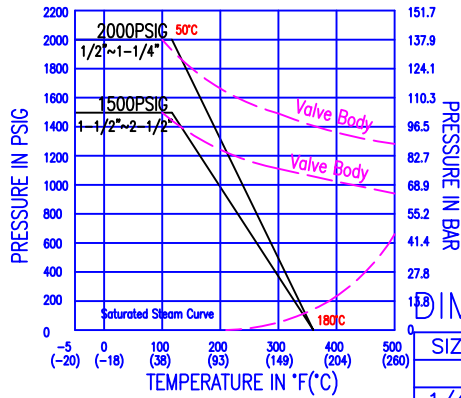
83-50

SIZE	ϕI	ϕJ	ϕK	LF	ϕQ	N	W	W1
	F	F	F	F	F	F	F	F
1/2"	95	65	45	130	14	4	16	2
3/4"	105	75	58	150	14	4	18	2
1"	115	85	68	160	14	4	18	2
1 1/4"	140	100	78	180	18	4	18	2
1 1/2"	150	110	88	200	18	4	18	3
2"	165	125	102	230	18	4	20	3
2 1/2"	185	145	122	290	18	4	18	3

Series 83R 1/2"~2-1/2" (Reduced Port)

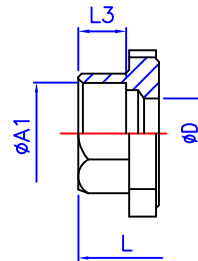
SEAT: PTFE or RTFE

Pressure Vs. Temperature Chart



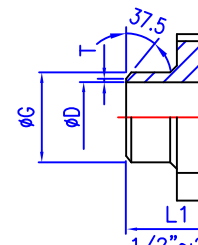
THREADED END

83-10



SOCKET WELD END

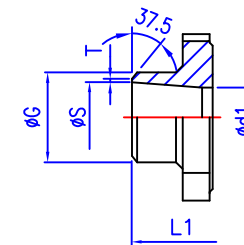
83-20



BUTT WELD END

83-30

1/2"~2"-Full port



BUTT WELD END

1/4"~3/8"-Full port

1/4"~2"-Full port SCH.40

1/2"~2-1/2"-Reduced SCH.40

* SCH. 40 Available on request

DIMENSION (mm)

SIZE	ϕA	$\phi A1$		ϕD		L		L1		L3		ϕG		T		ϕS		$\phi d1$		ISO5211	
		F	R	F	R	F	R	F	R	F	R	F	R	F	R	F	R	F	R	F	R
1/4"		14.3		10		64.8		64.8		10		13.7				9.24		9.24		FO3	
3/8"		17.6		10		64.8		64.8		10		17.5				12.53		10		FO3	
1/2"	NPT	21.9	21.9	15	10	72.5	64.8	75	64.8	10	10	21.7	21.7	1.6	1.6	15.76	15.76	15	10	FO3	FO3
3/4"		27.3	27.3	20	15	85.4	72.5	90	74.8	13	13	27.2	27.2	1.6	1.6	20.96	20.96	20	15	FO3	FO3
1"	DIN259	33.9	33.9	25	20	105.3	85.4	110	89.8	13	13	34	34	1.6	1.6	26.64	26.64	25	20	FO4	FO3
1 1/4"	DIN2999	42.8	42.8	32	25	111	105.3	115	109.4	13	13	42.7	42.7	1.6	1.6	35.08	35.08	32	25	FO4	FO4
1 1/2"	ISO228	48.9	48.9	38	32	127.3	111	130	114.4	13	13	48.6	48.6	1.6	1.6	40.94	40.94	38	32	FO5	FO4
2"	BSP	61.3	61.3	50	38	142.8	127.3	142.8	145(Round)	130	16	60.5	60.5	1.6	1.6	52.51	52.51	50	38	FO5	FO5
2 1/2"				ANSI 74 PN 76.9	50		145		145		16		76.1		1.6		62.68		50		

ORDER	DATE	REASON FOR CHANG	Legend	CHANG BY	REMARK	MATERIAL	DATE	2012'07,18	CHECKED BY	DRAW BY	Flora L
							DRAWING	V83-2	DRAWING NAME	83 SERIES (END CAP)	