



Szalai és Társa Kft.
1992

RD64F2-A105



CHECK VALVES



*the image is for illustration purposes only,
exact appearance based on the current version on request

APPLICATION :

Water, steam, oil, etc.

GENERAL CHARACTERISTICS :

Range from DN15 up to DN32 .
Installation in horizontal position.
Opening pressure 0,1 bar
seat with spring

STANDARDS :

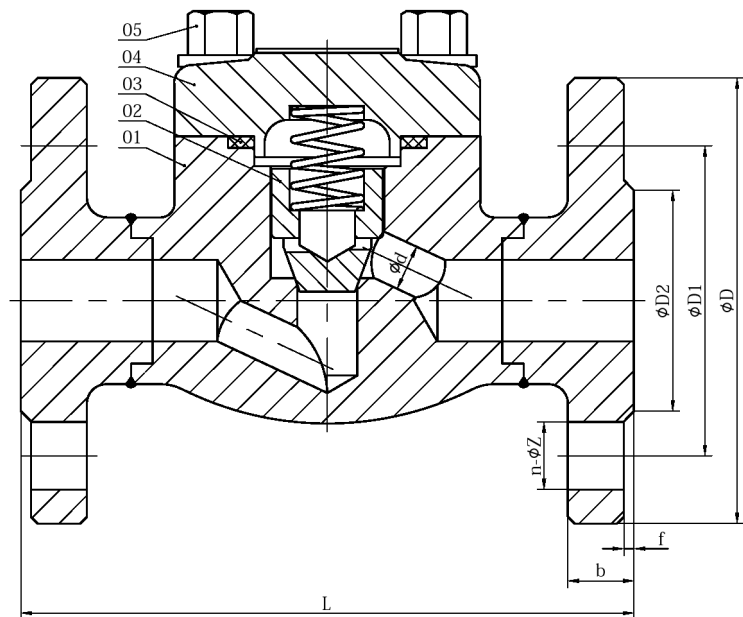
Manufacture according to DIN 3356
Face to Face : DIN 3202-F2
Mounting between flanges : PN16/40/64 EN 1092-1
Inspection and test: DIN 3230
Directive 2014/68/EU

WORKING CONDITIONS :

Maximum Working Pressure : 64 bar.
Maximum allowed fluid Temperature : -29 °C / +425 °C.

MATERIALS:

No.	Part	Material
1	Body	A105+13Cr
2	Disc	F6a
3	Gasket	304+Graphite
4	Bonnet	A105
5	Bolt	B7



DIMENSIONS :

DN	L	D	D1	D2	b	n-ØZ	f
15	210	105	75	45	20	4-Ø14	2
20	230	130	90	58	22	4-Ø18	2
25	230	140	100	68	24	4-Ø18	2
32	260	155	110	78	26	4-Ø22	2